



*Proudly Celebrating*



*20 Years of Excellence*

**Kitchenware, Giftware & Lifestyle**

**2024 Catalogue, 20th Anniversary Edition**

# Welcome to Oceania Trade Link



## About OTL

*Celebrating*  
**20**

Since 2004, Oceania Trade Link has been proud to supply high quality kitchenware, lifestyle and giftware products to retailers across Australia, New Zealand and further afield. 2024 marks our 20th birthday as a company, and so we want to thank all of you; our customers, our sales agents and our staff over these 20 years for your support. We couldn't have done it all without you, and we hope that we can continue to support you in turn long into the future.

We have dedicated ourselves to searching for the best established and new to market products, and we offer many solutions to suit yours and your customers' needs. We pride ourselves on helping our customers with OEM and custom projects of all sizes, so please get in touch with one of our friendly sales team today!

## About Our Catalogue

While we've worked hard to make sure that our catalogue is as accurate as possible, some things are unavoidable - colour reproduction from our printers (or on your screen) may mean that the colour and finish of some products will be slightly different from the ordered product.

We also feature a number of products that have natural finishes, as well as hand-made and hand-finished products, and in these cases the appearance, finish and dimensions may vary slightly from what you see in the catalogue.

Please feel free to reach out to our team - we're available to help with any questions you may have.

## Contacting OTL

### Head Office

**Oceania Trade Link Pty Ltd,**  
the home of Icon Chef Pty Ltd

t. (07) 3356 6066

e. [sales@otlink.com.au](mailto:sales@otlink.com.au)

w. [otlink.com.au](http://otlink.com.au)

p. PO Box 100 Paddington,  
QLD 4064, Australia

### Visit our Office

5/62 Bishop St. Kelvin Grove,  
QLD 4059, Australia

### Visit our Showroom

4/62 Bishop St. Kelvin Grove,  
QLD 4059, Australia

## Our Nationwide Agents

### QLD

Matthew Hopwood

t. +61 410 349 785

f. +61 7 3036 5598

e. [mattsaqld@gmail.com](mailto:mattsaqld@gmail.com)

### SA

Anne Clark

m. 0413 150 053

e. [bloodstone@adam.com.au](mailto:bloodstone@adam.com.au)

### NSW & ACT

KCL Agencies

t. (02) 8065 1213

m. 0413 485 997

e. [info@kclagencies.com.au](mailto:info@kclagencies.com.au)

### WA

Kate & Baz

Nie Agencies

m<sub>1</sub>. 0419 197 609

e<sub>1</sub>. [katenieipad@gmail.com](mailto:katenieipad@gmail.com)

m<sub>2</sub>. 0407 120 074

e<sub>2</sub>. [bknie@wn.com.au](mailto:bknie@wn.com.au)

### VIC & TAS

Imogen Smith

m. 0402 240 257

e. [imogen@retailagent.com.au](mailto:imogen@retailagent.com.au)





# 4.

## Omotenashi

Adding a touch of Japanese culture to your home, from **Pages 4-65**



# 66.

## Icon Chef

Kitchen must-haves from **Pages 66-123**



# 124.

## Betty Bossi

Swiss Innovations **Pages 124-133**



# 134.

## Takumi

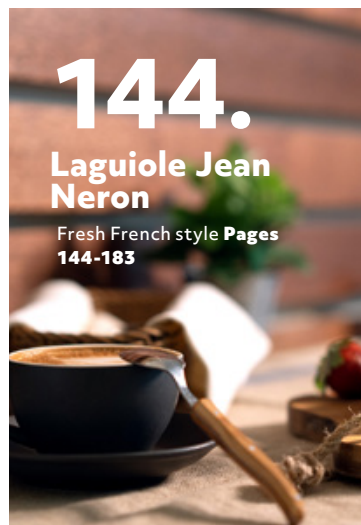
The mark of the artisan from **Pages 134-143**



# 184.

## Kyocera

High-tech ceramic blades **Pages 184-205**



# 144.

## Laguiole Jean Neron

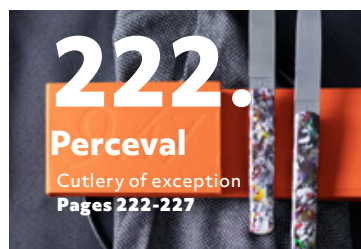
Fresh French style **Pages 144-183**



# 206.

## MoHA!

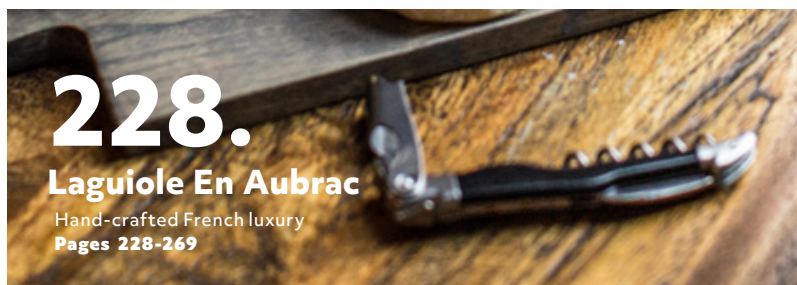
Swiss Smart Design **Pages 206-221**



# 222.

## Perceval

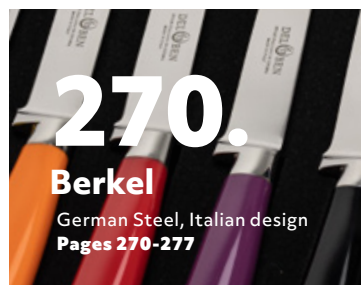
Cutlery of exception **Pages 222-227**



# 228.

## Laguiole En Aubrac

Hand-crafted French luxury **Pages 228-269**



# 270.

## Berkel

German Steel, Italian design **Pages 270-277**



おもてなし Omotenashi [O-mo-te-na-shi] is deep-rooted in Japanese culture, and means to wholeheartedly look after guests.

It is a selfless practice which centres around care for the guest, not the expectation of receiving something in return. Hospitality and care are provided from the heart, unhidden and unprotected, a deeply respected practice. These ceramics embody the three key principles of omotenashi: empathy, anticipation, and authenticity.

We hope that you embody these values when using these authentic, Japanese made ceramics; looking after your guests and yourself with care, the Omotenashi way.





# 1.

## A Journey Through Japan

Learn about the history and future of Omotenashi on **Pages 6 & 7**

# 2.

## Lifestyle

Japanese made gifts and accessories for the home from **Pages 8-11**

# 3.

## Drinkware

Sake & tea, absolute essentials of the Omotenashi spirit from **Pages 12-27**

# 4.

## Giftware

A range of products to share the spirit of Japanese hospitality from **Pages 28-34**

# 5.

## Ramen

A familiar classic, ramen bowls & serving accessories on **Pages 35 & 36**

# 6.

## Utensils

Learn about a range of techniques and art styles, traditional and modern, applied to a range of bowls, plates and dishes on **Pages 37 & 38**

# 7.

## Pattern Stories

Learn about a range of techniques and art styles, traditional and modern, applied to a range of bowls, plates and dishes from **Pages 39-56**

# 8.

## Dining Bowls

Learn about a range of techniques and art styles, traditional and modern, applied to a range of bowls, plates and dishes from **Pages 57-59**

# 9.

## Servingware

Learn about a range of techniques and art styles, traditional and modern, applied to a range of bowls, plates and dishes from **Pages 60-65**



# 陶磁器

Ceramic Production Regions

日本海  
Sea of Japan

石川 九谷焼  
Ishikawa Kutaniyaki

京都 清水焼  
Kyoto Kiyomizuyaki

岐阜 美濃焼  
Gifu Minoyaki

山口 萩焼  
Yamaguchi Hagi-yaki

長崎 波佐見焼  
Nagasaki Hazamiyaki

岡山 備前焼  
Okayama Bizen-yaki

Lake Biwa  
Mount Fuji

四国  
Shikoku Island

九州  
Kyushu Island

三重 萬古焼  
Mie Bankoyaki

佐賀 伊万里焼 有田焼  
Saga Imariyaki Aritayaki

信楽焼 滋賀  
Shigarakiyaki Shiga

沖縄  
Okinawa



## A journey through Japan

Omotenashi works with a range of manufacturers from time-honoured ceramic producing regions throughout Japan, culminating a storied heritage of knowledge passed through history, combined with a fresh eye from enthusiastic local creatives.

These regions are renowned not just for their craftsmanship, but their raw materials. Clay, water, sand and dyes, all with unique properties, in some cases even being exclusive to a single valley or river, make every piece in the Omotenashi range a part of a unique experience.

Our factories are amongst the most respected in Japan, and we work with a specialist quality assurance team to make sure that every piece earns its Omotenashi label.



**NEW**  
for 2024

# Decorative Vases

Available in a range of soft hues, and inlaid with traditional print decorations, Omotenashi's miniature decorative vases are a fantastic gift that can be personalised with something as simple and touching as a single flower, reed or other unique plant clipping. The finish and shape on each vase features slight variances, and each one is packaged in its own gift box.



Rectangle

**M-5V-RECMIX**

4.5 × 4.5 × 11.5cm × Mixed order of 5



Sphere

**M-5V-SPRMIX**

7.5 × 7.5 × 6.5cm × Mixed order of 5



Triangle

**M-5V-TRIMIX**

7.5 × 7.5 × 6.5cm × Mixed order of 5





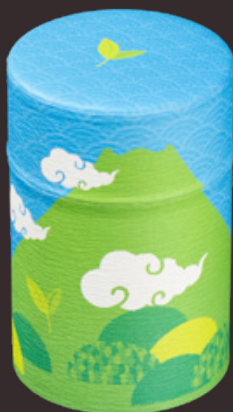
**NEW**  
for 2024

# Tea Containers

Omotenashi's air-tight, double-lidded tea containers ensure that their contents are protected from UV exposure and humidity, extending the life and freshness of loose-leaf tea, ground coffee, or matcha. These tea canisters are beautifully hand-wrapped in traditional Japanese Washi paper spanning a wide range of both colourful and traditional motifs; the perfect gift to give your host when visiting as a guest, or for guests as a take-home souvenir on extra special occasions.



Spring 100g  
M-TC1-FSP



Summer 100g  
M-TC1-FSU



Autumn 100g  
M-TC1-FAU



Winter 100g  
M-TC1-FWI







**Suzuko Daruma 100g**  
**M-TC1-DAR**  
*Includes decorative wish  
stickers and instructions*



**Suzuko Manekineko Gold 100g**  
**M-TC1-CAG**



**Suzuko Manekineko White 100g**  
**M-TC1-CAW**



**Fuji Sunflower 100g**  
**M-TC1-SUF**



**Blossom 200g**  
**M-TC2-BLS**



**Katazome Hana 200g**  
**M-TC2-KHANA**



**Mizutama 200g**  
**M-TC2-MIZU**



**Yuzen Blue 200g**  
**M-TC2-YUBL**



**Yuzen Green 200g**  
**M-TC2-YUGR**



# Teapots & Tea Service

Tea service or even a tea ceremony is considered an absolutely essential part of Omotenashi.

Hosts may even make sure to tailor their selection of teapot and teacups to suit the style of their guest and the relationship they share.



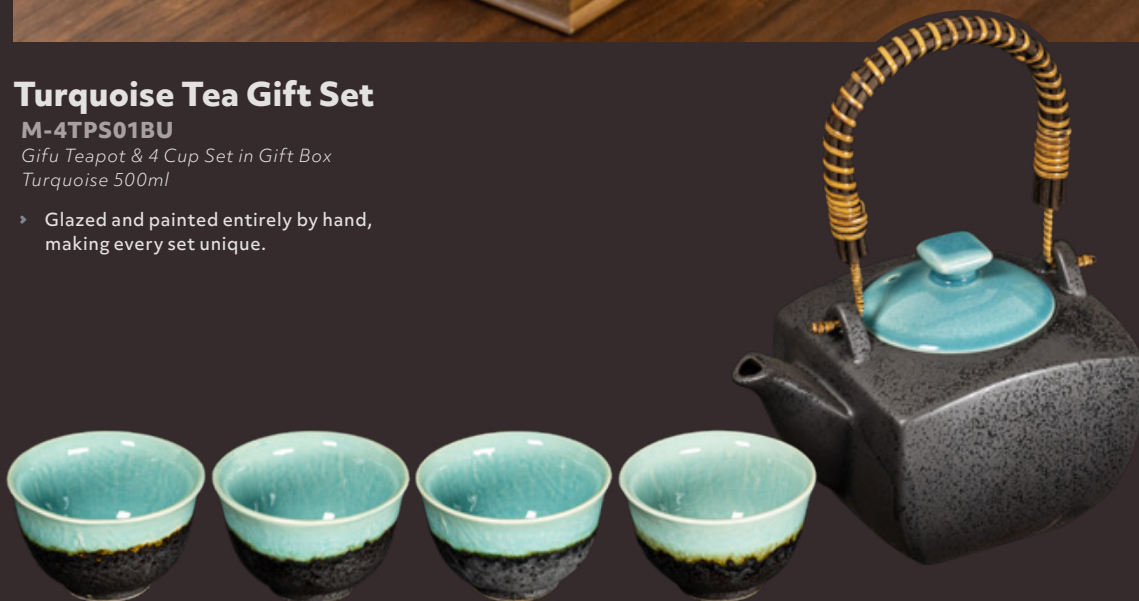
## Turquoise Tea Gift Set

**M-4TPS01BU**

*Gifu Teapot & 4 Cup Set in Gift Box*

*Turquoise 500ml*

- › Glazed and painted entirely by hand, making every set unique.



## 500ml Gifu Teapot



Matte Gray  
M-TP013BK



Matte White  
M-TP016WH



Gloss Brown  
M-TP017BR



## Tea Pot Strainer

6.2 × 5cm  
M-ACC-D6.2  
6 × 7cm  
M-ACC-D6.0  
7 × 5.8cm  
M-ACC-D7.0

The same high-quality, Japanese filter  
as found in Omotenashi's beautiful  
teapots



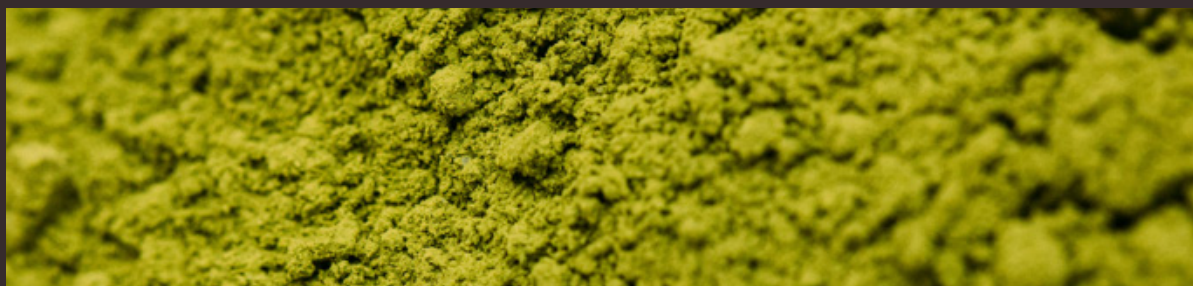
NEW  
for 2024

# Matcha Tea Sets & Accessories

Enjoyed for its historical and ceremonial significance, as well as its reported health benefits, Matcha is made from specially grown, rich green tea leaves that are ground to a powder and whisked into hot water to make a rich, delicious tea.

While in Australia we mostly get to enjoy Matcha as a seasonal flavouring in sweets and baked treats, there's no substitute for the original tea, freshly mixed at home.

With the Matcha whisk, traditional measuring spoon and flat-based bowl included in Omotenashi's Matcha Gift Set, making your own freshly brewed Matcha is not just easy, but can be a calming and meditative experience, too.



## Akaeobana

Gift Set **M-3MB-OOB**  
Featuring Matcha Bowl, Whisk & Spoon

Single Bowl **M-MB125OOB**  
Ø12.5 × 8cm



## Nishoku

Gift Set **M-3MB-NIS**  
Featuring Matcha Bowl, Whisk & Spoon

Single Bowl **M-MB125NIS**  
Ø12.5 × 8cm

## Matcha Making Set

**M-3WhiskSet**

Set including Matcha Whisk, Matcha Spoon and Tea Spoon





# Tea Bowl Gift Sets

Tea bowls are designed for a more meditative experience than a traditional teacup.

Here, guests are given the opportunity to take their time enjoying the tea with a wider range of their senses;

The smell and taste made more present from the increased surface area, the colour more visible through the wide mouth, and even the touch of these uniquely textured bowls that fill the palm.



## Hanayuzen Chazukedon

M-CS12-S25

Set of 5 Bowls in gift box  
Ø12 × 8cm × 5



# Tea Cup Gift Sets

## Hachiyouhen

M-CS8-HC1

Set of 5 Cups in gift box

Ø9 × 8cm × 5



## Goyuu Rock Cup

M-CS9-YS3

Set of 5 Cups in gift box

Ø9 × 8.5cm × 5







## Sogimegosai

M-CS8-K38

Set of 5 Cups in gift box  
 Ø8.5 × 9.5cm × 5



## Yuzen Sankaku

M-CS8-B4

Set of 5 Triangle Base Cups in gift box  
 Ø8.5 × 6.5cm × 5



## Rakuyouan

M-CS8-K2

Set of 5 Cups in gift box  
Ø8.5 × 9.5cm × 5



## Heiseizakura

M-CS7-YMK3

Set of 5 Cups in gift box  
Ø8 × 8cm × 5





# Lagoon

Inspired by the serenity of Lake Biwa and the surrounding nature of trees, mountains and skies reflected in its surface, the Lagoon range of drink-ware feature rich blues, greens and soft pales varying textured outers.

These cups are the perfect gift for a fast-moving mind, or for serving guests who need a little gentle encouragement to take a breath, slow down and take their time to reflect and enjoy each moment.

## Tea Cups

**M-CS8-K41**

Set of 5 Cups in gift box  
Ø8.5 × 9.5cm × 5



## Tea Bowls

**M-CS10-K42**

Set of 5 Tea Bowls in gift box  
Ø10.5 × 7cm × 5



**NEW** Mugs  
**M-2MS12-42C**

Set of 2 Mugs in Gift Box  
Ø12 × 7cm × 2



**NEW** Beer Glasses  
**M-2CS-130**

Set of 2 Tumblers in gift box  
Ø8.5 × 9.5cm × 2

# Dansai

## Tea Cups

M-CS8-S31

Set of 5 Cups in gift box  
Ø8.5 × 9.1cm × 5



## **NEW** Mugs

M-2MS12-36B

Set of 2 in gift box  
Ø12 × 7cm × 2





# Meito No Sato



## Tea Cups

M-CS8-K8

Set of 5 Cups in gift box  
Ø8.5 × 9.5cm × 5



## Tea Bowls

M-CS12-S5

Set of 5 Tea Bowls in gift box  
Ø12 × 8cm × 5



# Hanari



## Tea Cups

M-CS7-YMK5

Set of 5 Cups in gift box  
Ø8 × 8cm × 5



## Tea Bowls

M-CS12-YMK6

Set of 5 Tea Bowls in gift box  
Ø12 × 6cm × 5





# Individual Tea Cups



**Kuroao**  
Ø8 × 7.5cm

**M-C8-75KU**



**Nishoku**  
Ø8 × 7.5cm

**M-C8-75NI**



**Oribehangake**  
Ø8 × 7.5cm

**M-C8-75OR**



**Igahanagake**  
Ø8 × 10cm

**M-C8-10IG**



**Oribehake**  
Ø8 × 10cm

**M-C8-10OR**



**Igahake**  
Ø10 × 11cm

**M-C10-11IG**



**Kurobuki**  
Ø10 × 11cm

**M-C10-11KU**



**Oribehake**  
Ø10 × 11cm

**M-C10-11OR**



**Shirohake**  
Ø10 × 11cm

**M-C10-11SH**

# Sake Sets

**乾杯!** "Kan-pai!" (Cheers!) - There isn't a more exciting word in an evening with friends! Sharing sake ("Nihonshu" in Japan) is a beloved bonding experience to bring friends and guests together. Make sure that you each fill each others cups (Never your own), and to leave a little in the bottom when you're done - otherwise your friend will make sure to fill it for you again!





# Sake for Two



**NEW** Blue

**M-2SABL16**

Fuku 228ml Sake Flask  
& 2 Cups in Gift Box



**NEW** "Sake"

**M-2SASA10**

Fuku 144ml Sake Flask  
& 2 Cups in Gift Box



**NEW** Fuku "Uniform"

**M-2SAFU16**

Fuku 228ml Sake Flask  
& 2 Cups in Gift Box



**M-2SAFU10**

Fuku 144ml Sake Flask  
& 2 Cups in Gift Box



# Sake for Four



## Mashiko "Plum"

**M-4SAKNS**

Plum 220ml Sake Flask  
& 4 Cups in Gift Box



## Doban Tamasudare

**M-4SAKOBK**

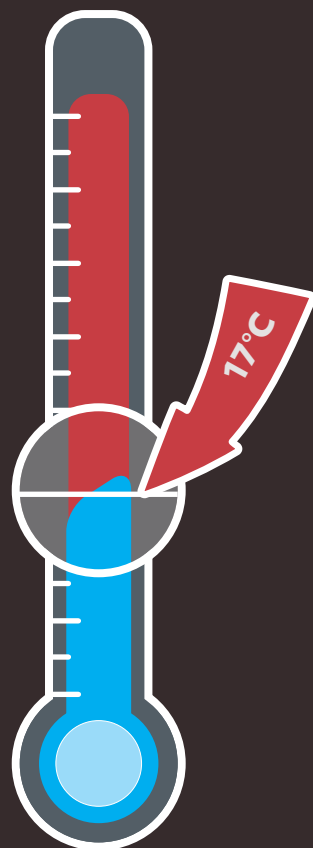
Dark Blue 330ml Sake Flask  
& 4 Cups in Gift Box



**M-4SAKOWH**

Powdered Pine 330ml Sake Flask  
& 4 Cups in Gift Box





**NEW**

## Hana Zakura Colour-changing Glass

125ml

Ø5.5 × 10.3cm

**M-CCG5-HANA**

210ml

Ø7.5 × 8.7cm

**M-CCG7-HANA**

These glass tumblers change colour, revealing the beautiful hues of the winter flowers as long as the drink inside remains at an optimal drinking temperature (under 17°C)

# Individual Gift Sets

The perfect gift for the individual guest, or host, these sets include a core-range pattern Omotenashi Ramen/Donburi Bowl and set of chopsticks in elegant packaging.

The gift box is decorated with traditional Washi patterns and a brief explanation of the spirit of Omotenashi.



*Omotenashi is a term deep-rooted in Japanese culture, and means to wholeheartedly look after guests. Hospitality and care are provided from the heart, with a genuine desire to do everything to create a memorable experience for the guest.*



## White Koi Gift Set

**M-1BS1801ST**

Bowl design may vary. Please reach out to our head office team or your OTL Sales Agent for any special requests  
(Price adjustments and custom MOQ may apply)





## Medetai Sea Bream Pattern

Medetai Blue **M-1BS1801MB**

Medetai Red **M-1BS1801MR**

18.5 × 9cm Ramen Bowl & Chopsticks Set  
in Gift Box



## Etegami Calligraphy Drawings

Tai (Sea Bream) **M-1BS1960TA**

Kani (Crab) **M-1BS1960KA**

19 × 8.5cm Ramen Bowl & Chopsticks Set  
in Gift Box

## Gift Sets for two



### Mt. Fuji

**M-2BS15FJ**

*2 Sets of Donburi Bowls and Chopsticks in Gift Box  
Ø15 × 7cm × 2*



### Edazakura

**M-2BS15323SKR**

*2 Sets of Donburi Bowls and Chopsticks in Gift Box  
Ø15 × 7cm × 2*





## Kinsami Koimari

**M-BS14665**

*Set of 2 Donburi Bowls in gift box*

*Ø14.5 × 8.5cm × 2*

An ancient method of producing and decorating glazed enamel, the koimari style's roots can be traced to the late 1600s and is maintained by only a few artisans today.



## Dragon

**M-2BS15DG**

*2 Sets of Donburi Bowls and Chopsticks in gift box*

*Ø15 × 7cm × 2*





**Hana Fishing Net** *Gift Set of 2*  
**M-2BS15HF**

*2 Sets of Donburi Bowls and Chopsticks in Gift Box*  
 Ø15 x 7cm x 2



**Sayanami** *Gift Set of 2*

*2 Sets of Donburi Bowls and Chopsticks in Gift Box*  
 Ø15 x 7cm x 2

**Black**  
**M-2BS15SBK**

**Blue**  
**M-2BS15SBU**





**NEW** **Igazakura** Gift Set of 2

**M-2BS15SKIG**

2 Sets of Donburi Bowls and Chopsticks in Gift Box  
Ø15 × 7cm × 2



**NEW** **Hassuizakura** Gift Set of 2

**M-2BS15SKHA**

2 Sets of Donburi Bowls and Chopsticks in Gift Box  
Ø15 × 7cm × 2





## Maiko Gift Set of 2

**M-2BS15MA**

2 Sets of Donburi Bowls and Chopsticks in Gift Box  
Ø15 × 7cm × 2



## Samurai Gift Set of 2

**M-2BS15SA**

2 Sets of Donburi Bowls and Chopsticks in Gift Box  
Ø15 × 7cm × 2



## Sumo Gift Set of 2

**M-2BS15SU**

2 Sets of Donburi Bowls and Chopsticks in Gift Box  
Ø15 × 7cm × 2









# Ramen

These ramen bowls, produced in a traditional 19th Century design are sought after thanks to their beautiful shape and finishing. Few artisans still produce these beautiful, richly coloured patterns that requires expert finishing and a multi-stage process to create.



Ninja  
M-B20NI07



Samurai  
M-B20SR04



Kabuki  
M-B20KB04





The "double happiness" mark 囍 emblazoned in many of the patterns on these bowls is said to bring good fortune to guests and their hosts on special occasions.

Chuka Green Dragon  
M-RB19417

Chuka Red Dragon  
M-RB19418

Chuka Teal Garden  
M-RB19648



**Airindo**  
M-5SP16AIR

Set of 5 Ramen Spoons in Gift Box  
17cm x 5

Ramen spoons feature a unique shape that allows them to sit on the edge of the bowl





## Airindo

**M-5CRSAIR**

Set of 5 Chopstick Rest/Dishes  
5.5 × 5 × 2.5cm × 5



## Tsuru

**M-5CRS002**

Set of 5 Chopstick Rests  
6 × 5 × 3.2cm × 5







## Shanpan

M-CHS-901

Shanpan chopsticks are finished in their range of soft hues by hand.



## Aizome

M-CHS-902

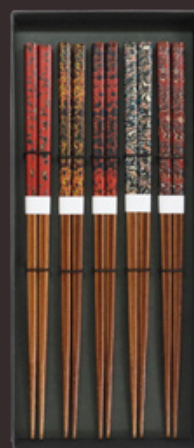
Printed in the spirit of traditional Japanese indigo dyeing, these chopsticks feature a print made with authentic indigo, designed to celebrate the original "Aizome" process.



Aikomon  
M-CHS-001



Shiokaze  
M-CHS-002



Nosutarujia  
M-CHS-003

# Etegami Flatware

Etegami - literally translating to "image-letter" is the pairing of calligraphy with bright, freshly coloured illustrations.

The same techniques used for the traditional lettering is applied to the line-art of the drawings.

The craft was pioneered by calligraphers who became bored with the rigid rules of their craft, and began experimenting with bright colours and light-hearted subjects on postcard paper.

Etegami has since evolved from a plaything into its own renowned style.



## Etegami Yasai *Drawings of Vegetables*

From the Paprika fresh out of the crisp Spring thaw, to Red Turnip as the weather warms late in the season, to Summer's Eggplant, then Pumpkin starts to taper into the cooler autumn and finally White Radish as the last harvest of the year as the winter frost arrives.

These dishes are based on the year-round harvest, acting as a journey through the harvesting seasons, whether as multiple courses of one meal, or a shared experience for the whole table.





ピーマン  
"Paprika" or Capsicum

赤かぶ  
"Akakabu" or Red Turnip

ナス  
"Nasu" or Eggplant

かぼちゃ  
"Kabocha" or Pumpkin

だいこん  
"Daikon" or White Radish



## Paprika, Akakabu, Nasu & Kabocha Gift Set of 4

**M-4BS13VG**

Four Small Donburi Bowls in Gift Box  
Ø13.5 × 7cm × 4



## Akakabu & Nasu Gift Set of 2

**M-2BS16VG1**

Two Large Donburi Bowls  
with two sets of Chopsticks in Gift Box  
Ø16.2 × 8.8cm × 2



## Paprika & Kabocha Gift Set of 2

**M-2BS16VG2**

Two Large Donburi Bowls  
with two sets of Chopsticks in Gift Box  
Ø16.2 × 8.8cm × 2



**Etegami Tai & Kani**  
*Drawings of Fish & Crab*



**Etegami Tai Plate** **M-P2480TA**  
 Ø24.5 × 4cm

**Etegami Tai Bowl**  
 Ø16 × 9cm **M-B1601TA**  
 Ø19 × 8.5cm **M-B1960TA**



**Etegami Tai Dish** **M-D930TA**  
 Ø9.5 × 3cm

**Etegami Tai Bowl** **M-B1301TA**  
 Ø11 × 6cm



**Etegami Kani Plate** **M-P2080KA**  
 Ø20.5 × 4.5cm

**Etegami Kani Bowl** **M-B1960KA**  
 Ø19 × 8.5cm

**Etegami Kani Bowl** **M-B1550KA**  
 Ø16 × 8.5cm





**Tai**  
Gift Set of 2  
**M-2BS1601TA**

Two Donburi Bowls with two sets of  
Chopsticks in Gift Box  
Ø16 × 9cm × 2



**Tai**  
Serving Plate  
**M-DP2480TA**

Deep Plate in Gift Box  
Ø25.5 × 6.5cm



**Tai**  
Gift Set of 4  
**M-4BS11TA**

Four Rice Bowls in Gift Box  
Ø11 × 6cm × 4



**Tai & Kani**  
Gift Set of 4  
**M-4BS13TK**

Four Donburi Bowl in Gift Box  
Ø13.5 × 7cm × 4



## **Medetai** *Sea bream*

Featuring the auspicious ("Medetai") Sea Bream ("Tai"), a dish shared at family gatherings and celebrations, the Medetai range is perfect for celebratory occasions. The range is available in Medetai Blue and Medetai Red. Colour match, or create a beautiful mixture.



### Medetai Blue Plate

Ø9 × 2cm

M-P0928MB

Ø13.8 × 2.7cm

M-P1340MB

Ø16 × 3.5cm

M-P1650MB



### Medetai Red Plate

Ø9 × 2cm

M-P0928MR

Ø13.8 × 2.7cm

M-P1340MR

Ø16 × 3.5cm

M-P1650MR



### Medetai Blue Dish

Ø10.7 × 4cm

M-D1035MB



### Medetai Red Dish

Ø10.7 × 4cm

M-D1035MR



### Medetai Blue Bowl

Ø13 × 5.5cm

M-B1345MB

Ø16 × 6.8cm

M-B1650MB

Ø18.5 × 9cm

M-B1801MB

### Medetai Red Bowl

Ø13 × 5.5cm

M-B1345MR

Ø16 × 6.8cm

M-B1650MR

Ø18.5 × 9cm

M-B1801MR

# Kyo Sendan

## *A Thousand Ancient Lines*



### Kyo Sendan

#### *Gift Set of 2*

2 Sets of Donburi Bowls and Chopsticks in Gift Box  
 Ø15 × 7cm × 2

Earthen & Black	<b>M-2BS15BST</b>
Earthen	<b>M-2BS15KSE</b>
Black	<b>M-2BS15KSB</b>

### *Donburi Bowls*

Ø15 × 7cm

Earthen	<b>M-B15182</b>
Black	<b>M-B15183</b>







## Kyo Sendan Earthen

Large bowl  
Ø21 × 7.5cm

**M-B21188**

Large plate  
Ø24.5 × 5cm

**M-DP24186**



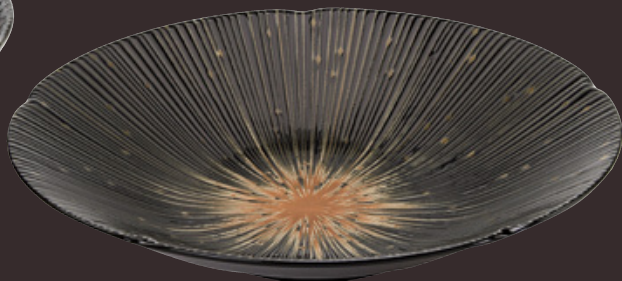
## Kyo Sendan Black

Large bowl  
Ø21 × 7.5cm

**M-B21189**

Large plate  
Ø24.5 × 5cm

**M-DP24187**



## Kyo Sendan White

Bowl  
Ø15 × 7cm

**M-B15323KS**

Plate  
Ø17 × 5cm

**M-DP17386KS**

Large Bowl  
Ø21 × 6.2cm

**M-B21386KS**

Large Plate  
Ø24.5 × 4cm

**M-P24086KS**



**Some  
Tokusa**  
*Grass Lines*







### Plate

Ø22.7 × 4.5cm  
Ø17 × 5cm

M-P2280ST  
M-P1755ST



### Deep Plate

Ø21 × 5cm

M-DP2168ST



### Bowl

Ø18.5 × 9cm  
Ø21.5 × 8cm

M-B1801ST  
M-B2101ST



### Dish

Ø13.7 × 5cm

M-D1335ST



### Serving Bowl

Ø17 × 6cm  
Ø20.5 × 7.5cm

M-B1655ST  
M-B2068ST



Ø20.5 × 7.5cm  
Gift Boxed

M-1BS2068ST

NEW





## Sabi Kesho

*Patinaed  
Surface*



### Bowl

21 × 7.8cm  
15 × 7cm

M-B21377SK  
M-B15323SK



### Gift Set of 2

M-2BS15323SK

2 Sets of Donburi Bowls  
& Chopsticks in Gift Box  
15 × 7cm × 2

## Tetsu Kesho

*Iron Surface*



### Bowl

21 × 7.8cm  
15 × 7cm

M-B21377TK  
M-B15323TK



### Gift Set of 2

M-2BS15323TK

2 Sets of Donburi Bowls  
and Chopsticks in Gift Box  
15 × 7cm × 2

# Hana Tsudoï

## Flower Gathering

Hana Tsudoï bowls feature a traditional, delicate porcelain finish, but with a unique difference.

Almost impossible to capture in a two-dimensional image, the final patterns are etched in the forming process at the earliest stages, giving the flowers a touchable effect, almost as if they were gathered and carefully pressed into the ceramic itself.

The beautiful aizome blue colour catches the light as it wraps around the texture in their otherwise perfectly smooth surface.



**NEW**

**Gift Set of 2**

**M-2BS15323HT**

2 Sets of Donburi Bowls and Chopsticks  
Ø15 × 7cm × 2



Donburi Bowl  
Ø15 × 7cm

**M-B15323HT**

Serving Bowl  
Ø21 × 6.2cm

**M-B21386HT**

Plate  
Ø24.5 × 4cm

**M-P24086HT**



# Fuji Sakura

## Fuji Cherry Blossoms



### Gift Set of 2

**M-2BS15323FZ**

2 Sets of Donburi Bowls and Chopsticks  
Ø15 × 7cm × 2



### Bowl

Ø12 × 6.5cm

Ø15 × 7cm

Ø21 × 7.8cm

**M-B12323FZ**

**M-B15323FZ**

**M-B21377FZ**

### Deep Plate

Ø16.3 × 4.7cm

**M-P16347FZ**

### Plate

Ø24.7 × 3cm

**M-P24447FZ**

# Hana Shidare

## Weeping Maple Flowers



**NEW**

### Gift Set of 2

**M-2BS1501HA**

2 Sets of Donburi Bowls and Chopsticks  
in Gift Box

Ø15 × 7cm × 2



**Bowl**

Ø16 × 8.5cm

**M-B1501HA**

**Natural Edge Bowl M-B1655HA**

Ø16.5 × 6cm





# Sakurazukushi

Filled with  
Cherry Blossoms



## Individual Bowls

Bowl

Ø16 × 8.5cm

M-B1602SD

Large Bowl

Ø21.5 × 8cm

M-B2101SD



**NEW**

## Gift Set of 2

M-2BS1602SD

2 Sets of Donburi Bowls and Chopsticks

Ø15 × 7cm × 2



## Sakurabiyori

Cherry Blossom  
Weather



**NEW** **Serving Bowl in Gift Box**

M-1BS2068SB

Ø20.5 × 7.5cm



## Individual Bowls

Bowl

Ø17 × 6cm

Serving Bowl

Ø20.5 × 7.5cm

M-B1655SB

M-B2068SB





## Aizome Budou

### Indigo Grapes



**NEW** Serving Bowl in Gift Box  
M-1BS2068AB  
Ø20.5 × 7.5cm



**Individual Bowls**  
Bowl M-B1655AB  
Ø17 × 6cm  
Serving Bowl M-B2068AB  
Ø20.5 × 7.5cm



**Kiku Karakusa**

**Syonzui**

**Tachibana**



Noodle Bowl  
Ø19 × 8.5cm

**M-B19KIK**



Noodle Bowl  
Ø19 × 8.5cm

**M-B19SYZ**



Noodle Bowl  
Ø19 × 8.5cm

**M-B19TBA**



Donburi Bowl  
Ø16.5 × 8cm

**M-B16KIK**



Donburi Bowl  
Ø16.5 × 8cm

**M-B16SYZ**



Donburi Bowl  
Ø16.5 × 8cm

**M-B16TBA**



NEW  
for 2024

## Sorigatadon



**Hanashippou**

Ø16 × 8.5cm

**M-B1650HAN**

Ø19 × 8.5cm

**M-B1960HAN**



**Hoso Tokusa**

Ø16 × 8.5cm

**M-B1650SHT**

Ø19 × 8.5cm

**M-B1960SHT**



**Kikusen**

Ø16 × 8.5cm

**M-B1650SKI**

Ø19 × 8.5cm

**M-B1960SKI**



**Fukizumi Tokusa**

Ø16 × 8.5cm

**M-B1650SFT**

Ø19 × 8.5cm

**M-B1960SFT**



**Hori Tokusa** *Black*

Ø16 × 8.5cm

**M-B1650STB**

Ø19 × 8.5cm

**M-B1960STB**



**Hori Tokusa** *White*

Ø16 × 8.5cm

**M-B1650STW**

Ø19 × 8.5cm

**M-B1960STW**

# Serving Bowls



Ginsai Seikaiha

**M-LB24090**

Ø24.5 × 7.5cm

**NEW**



Mujina Kiku

**M-LB24096**

Ø24.5 × 7.5cm



Sendan Tokusa

**M-LB24033**

Ø24.5 × 7.5cm



Emboss Tokusa

**M-LB24059**

Ø24 × 8cm







Hokusai Fuji

**M-LB24488**

Ø24.5 × 7.5cm



Sabikobiki

**M-LB24098**

Ø24.5 × 7.5cm



Negoro Sendan

**M-LB24097**

Ø24.5 × 7.5cm





## Serving Dishes

### Karakusa M-P3090KLB

Oval Plate  
30 × 15.5 × 5.5cm



### Tsunagi M-P3090TSN

Oval Plate  
30 × 15.5 × 5.5cm





**NEW** **Tsuki Usagi (Moon Rabbit)**

**M-3BS-TU**

*Set of 3 Nested Bowl Set in Gift Box*

Ø11/10.5 × 5.5cm

Ø13.5/13 × 6.5cm

Ø16.5/15.5 × 8cm



**NEW** **Futo Hoso (Big Roll)**

**M-3BS-FT**

*Set of 3 Nested Bowl Set in Gift Box*

Ø11/10.5 × 5.5cm

Ø13.5/13 × 6.5cm

Ø16.5/15.5 × 8cm



**NEW** **Uzu Karakusa**

**M-3BS-UZ**

*Set of 3 Nested Bowl Set in Gift Box*

Ø11/10.5 × 5.5cm

Ø13.5/13 × 6.5cm

Ø16.5/15.5 × 8cm



**NEW** **Hakkaku**

**M-4BS12HAK**

*Set of 4 Side Bowls in Gift Box*

Ø12 × 5.5cm × 4



## Sea Creatures

M-5DS9SEA

Set of 5 Shallow Dishes in Gift Box  
 Ø9.5 × 2.5cm × 5



## Namigata

M-5DS9AI

Set of 5 Side Bowls in Gift Box  
 Ø9.5 × 3.3cm × 5



## Shokaku

M-5DS8AI

Set of 5 Square Side Plates in Gift Box  
 Ø8.8 × 2.5cm × 5







We're excited to offer a range of in-store support to give your customers a touch-point for Omotenashi and the concepts of traditional Japanese hospitality, made available to you when placing your order.

Minimum order terms and availability limitations apply.  
Contact your OTL Sales Agent or Head Office to learn more



Icon Chef encompasses a range of contemporary kitchenware, lifestyle, and giftware products that have been awarded accolades for innovation, and smart design.

With contemporary styling and a focus on practicality and quality, the Icon Chef range was developed with the goal of enhancing the kitchen, and outdoor entertaining experience.





1.

### **Slice & Store**

Storage and organisation options for around the kitchen, home and outdoors from **Pages 68-85**

2.

### **On the Table**

Elegant servingware and fresh food display ideas from **Pages 86-97**

3.

### **Your own Cafe**

Make cafe-quality tea and coffee a reality at home from **Pages 98-101**

4.

### **In the Kitchen**

Core range kitchen must-haves from **Pages 104-110**

5.

### **Out & About**

High quality bags and on-the-go lifestyle products from **Pages 111-119**

6.

### **Icon Chef "Select"**

Unique ideas from international partners, represented in Australila by Icon Chef from **Pages 120-123**



With 30 usable knife slots, and 2 accessory slots, the Universal Knife Block 32, can comfortably store up to 14 knives, as well as a honing steel and scissors or other kitchen tool. Store, organise & access a variety of knives, up to 22cm in length.





## Transparent

### IC11011

Easy to clean - quickly dismantles, with dishwasher safe knife grid

Its clear sides make the knife block easy to keep clean and to organise your knives for easy access



## Wooden Finish

Black  
IC11012

Bamboo  
IC11013



- › Features a hole in the base, for easy cleaning
- › Made from beautiful bamboo wood, or wood with a smooth, matte-black finish



# Universal Knife Block



## Commercial

Thanks to their small format, and easy dismantling for thorough cleaning, these knife blocks are perfect for high-demand environments, where knife storage and organisation is a must - great for hospitality!



White, Square  
**IC11009**

- › Features slot for a honing steel and a pair of scissors, or other kitchen accessory
- › Low-maintenance gloss plastic finish



Round, Clear w/ Accessory Slot  
**IC11010**

- › Features a slot for honing steel or other kitchen accessory
- › Weighted base for added stability



## Rectangle *Lifestyle*



Rectangle Black  
**IC11004-BK**

- › Store & access a variety of knives quickly and easily
- › Narrow design offers ultimate storage with minimal footprint
- › Adds sleek, modern style to any kitchen



PLUS Bamboo  
**IC11008**

The same secure knife holding grid with a warm, natural finish bamboo block, now in a PLUS size.

- › Premium bamboo finish
- › Taller size can accommodate common 22cm knives, like extra-length bread knives

## Round *Lifestyle*

- › Features a hole in the base, for easy cleaning
- › Made from beautiful bamboo wood, or with a smooth, matte-black finish



Black with Stainless Steel Base  
**IC11007-BK**



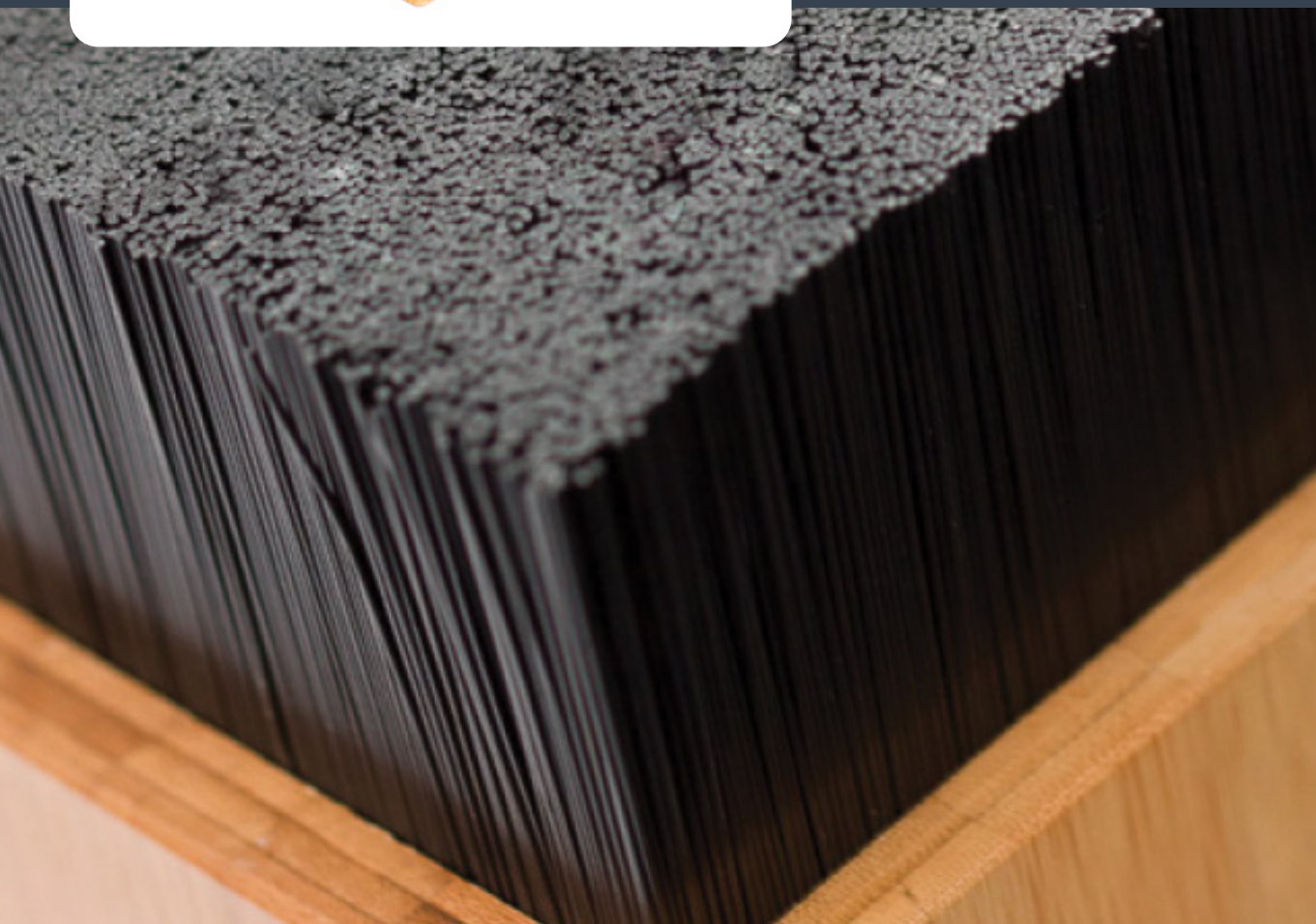
## Flexiblock PLUS

IC11000

The **Flexiblock PLUS** is an innovative take on the traditional knife block. Rather than the limited slots of traditional knife blocks, the **Flexiblock PLUS** features hundreds of hygienic silicone bristles.

These bristles move and bend to make room for any kind of knife or kitchen implement, all in a stylish bamboo finish.

- › Stylish, eco friendly bamboo
- › Flexible storage for knives up to 20cm long
- › Removable bristle insert is dishwasher safe, and easy to clean





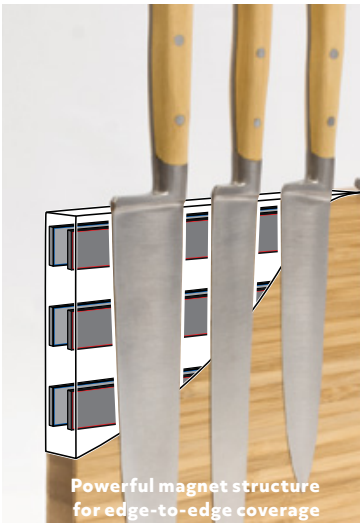
# Wooden Magnetic Knife Block

Making sure kitchen knives are on proud display, rather than hiding their craftsmanship in a knife block, these **Wooden Magnetic Knife Blocks** are a stylish display piece for any kitchen counter. Never grab hold of the wrong knife again!

- › Hygienic & easy to clean - suitable for professional and home kitchens alike
- › A stylish centerpiece for any benchtop
- › Edge-to-edge coverage with high-quality, high-powered magnets



A stylish centerpiece for any benchtop



Powerful magnet structure for edge-to-edge coverage

**NEW** **Single-Sided**  
Bamboo with Stainless Steel Base  
**IC11308**



**DUO**  
Black **IC11305**  
Bamboo **IC11307**



› Please note that not all knives will adhere well to a magnetic block



# Hand-Woven Baskets



A retailer favourite, these **Hand-Woven Baskets** are functional yet fashionable solutions, from buffet serving to storage and organisation.

- › Hand-crafted from BPA-free, food-safe material
  - › Water-proof & heat resistant to 120°C
  - › Dishwasher safe
  - › 5-year warranty





## **NEW** Serving Basket

- › Thanks to these baskets' heat and water resistance, being dishwasher-safe and stackable, the new serving basket is great for "takeout" style restaurants serving fish & chips, burgers and more.
- › Features an extra-wide base with steeper sidewalls than traditional serving baskets, allowing larger items to sit flat for better stability and presentation.

24 × 15 × 5cm  
**IC240150-BK**  
29 × 19 × 5cm  
**IC290190-BK**







## Cutlery Holder *with Pattern*

- › Perfect for displaying knives, holding, & sorting cutlery

28 × 12 × 6cm  
**IC100884-KH**



## Napkin Tray *with Pattern*

- › Fits standard-sized tissues & serviettes, perfect at the table indoors or out.

20 × 20 × 6cm  
**IC100882-KH**



## Shelf Organiser

- › Perfect for shelf organisation, stationery or fruit & nut display

30 × 21 × 7cm  
**IC100048-KH**



## Cutlery Holder - Khaki

25 × 9 × 7cm **IC100010-KH**  
28 × 11 × 7cm **IC100011-KH**  
24 × 14 × 8cm **IC100211-KH**

**NEW** Black

**IC100010-BK**  
**IC100011-BK**  
**IC100211-BK**

- › Perfect for displaying knives, holding, & sorting cutlery



## Woven Plate

- › Pairs beautifully with our display stands (p. 86) for an instantly professional serving finish

Ø 25 × 6cm **IC100091-KH**  
Ø 30 × 7cm **IC100093-KH**  
Ø 40 × 8cm **IC100095-KH**







## Square Laundry Basket *with Handles*

- › A square laundry basket with carry handles - also suitable for toy storage and organisation.

39 × 36/45cm  
**IC102660-KH**



## Round Laundry Basket *with Handles*

- › The classic round laundry basket, easy to maneuver or support with the body when holding with one hand to easily hang laundry.

Ø 38 × 36cm  
**IC102609-KH**



## Storage Basket *with Handles*

- › Great for organisation on shelves, in the pantry, or office storage.

31 × 21 × 15cm  
**IC101103-KH**  
36 × 28 × 19cm  
**IC101105-KH**  
40 × 33 × 20cm  
**IC101107-KH**



## Storage Basket

- › Perfect for office storage, designed to comfortably store large amounts of papers and documents
- › Also suitable for the linen closet, fitting towels, bedding covers and more

31 × 21 × 8cm (A5+ Size) **NEW**  
**IC100282-KH**  
38 × 30 × 13cm (A4 Size) **NEW**  
**IC101316-KH**  
50 × 40 × 18cm (A3 Size)  
**IC101079-KH**



## Dust Bin

- › Available in two sizes for use as a dustbin with liner, or as a waste paper basket or crafts organiser in the office.

Ø 26 × 28cm  
**IC102030-KH**  
Ø 31 × 37cm  
**IC102035-KH**







## Rectangle Tray

- › Perfect for displays of bread or pastries

31 × 17 × 4cm  
**IC500001-KH**  
 35 × 23 × 5cm  
**IC500002-KH**  
 40 × 30 × 5cm  
**IC500003-KH**  
 60 × 40 × 6cm  
**IC500005-KH**  
 50 × 40 × 10cm  
**IC300541-KH**  
 45 × 31 × 6-10cm  
**IC300611-KH**

*Angled sides*



## Round Tray

- › Great for in-store and buffet fruit and pastry displays

Ø 22 × 5cm  
**IC500312-KH**  
 Ø 29 × 6cm  
**IC500314-KH**  
 Ø 35 × 5cm  
**IC500316-KH**  
 Ø 45 × 12cm  
**IC300452-KH**



## Carrier Tray

- › A catch-all for coffee tables, & bakery displays

31 × 21 × 8cm  
**IC100292-KH**  
 41 × 21 × 8cm  
**IC100293-KH**  
 31 × 31 × 8cm  
**IC100294-KH**



## Cube

14 × 14 × 8cm

*Khaki*  
**IC100210-KH**



*Black*  
**IC100210-BK**

- › Perfect small-goods organiser for loose stationery





## Decorative Picnic Basket

A whimsical, traditional picnic basket design in a range of shelf-friendly sizes. These baskets might look cute, yet they feature the same toughness and durability as the rest of our range of hand-woven baskets, making them great for demanding applications where they need to reliably withstand the elements, heavy use and cleaning, while always looking their best.

- › Ideal for in-store merchandising, photography styling, or even for unique cases like accessorising weddings and other functions, whether inside or outdoors

30 × 20 × 12/22cm

**IC200420-KH**

*Squared handle*



18 × 14 × 9/22cm

**IC200418-KH**

16 × 14 × 9/22cm

**IC200416-KH**







## Travel Baskets

- › Features handle & hinged lid, perfect for a quaint picnic, or functional home decoration

### Oval Picnic Basket

**IC200390-KH**

46 × 20 × 25/46cm

### Rectangle Picnic Basket

**IC200470-KH**

37 × 26 × 21/39cm



## Carrier Basket

- › Store magazines & more at home, or carry to the markets on the weekend

34 × 16 × 24/40cm

**IC200166-KH**

41 × 20 × 28/46cm

**IC200168-KH**







## Flat-Weave Hand Woven Baskets

Available in Natural or Black, and multiple sizes. Made from the same BPA-Free material as Icon Chef's Round-Weave Hand Woven Baskets, these hand-woven baskets are food-safe, water-proof & heat resistant to 120°C, dishwasher safe and feature the same robust 5-year warranty.



A gorgeous 3cm flat weave inspired by simplicity, minimalism and functionality. **Flat-weave baskets** create endless possibilities for food display or storage in the kitchen, pantry, cupboards, or bathrooms.





## Tray

	Khaki	Black
30 × 18 × 8cm	IC800742-KH	IC800742-BK
35 × 23 × 8cm	IC800852-KH	IC800852-BK
40 × 27 × 8cm	IC800962-KH	IC800962-BK



## Storage

	Khaki	Black
30 × 18 × 16cm	IC800744-KH	IC800744-BK
35 × 23 × 16cm	IC800854-KH	IC800854-BK
40 × 27 × 16cm	IC800964-KH	IC800964-BK



## Plate/Bin

Ø 24 × 12cm	IC802443-KH
Ø 28 × 12cm	IC802553-KH
Ø 24 × 24cm	IC802446-KH



## Organiser

15 × 15 × 9cm	IC800332-KH
19 × 19 × 9cm	IC800442-KH
23 × 23 × 9cm	IC800552-KH





## Reversible Display Stands

Perfect for buffets, catering events and more - able to fit a wide variety of woven baskets, serving trays, dishes, or plates and available in multiple heights.

- › Dishwasher safe, BPA-Free
- › Available in 3 heights
- › Complements our woven basket range on pages 75-85

**Small**  
**IC12301**  
11cm

**Medium**  
**IC12302**  
14cm

**Tall**  
**IC12303**  
18cm

**Pre-Packed Set of 3**  
**IC12300PP**





## Espetada Stand with Quick Release Skewer

### IC12403

Perfect for serving kebabs or other BBQ foods, this stand adds theatre to any table. The base is designed to hold a plate for additional servings or sides.

- › Includes 1 skewer with locking slider (Additional skewers available to order)
- › Elegant stainless steel design
- › Both the stand and skewers are dishwasher safe
- › 56cm tall

## Also Available

Additional Skewer

IC12203





Each **Salt Pig** is carved from a single piece of wood and supplied without any extra finish. This means no glued joints, fewer splits and cracks and no chance of adhesives or toxic coatings leaching into the salt or spices stored within.





## Salt Pig

- › Magnetised lid
- › Carved from one solid piece of wood
- › Ideal for gourmet salts or other spices

### Olive Wood

IC11201-OL

- › Made from beautifully figured olive wood
- › 10cm diameter
- › The rich scent of olive wood is sure to make a great first impression



### Acacia Wood

IC11202-AC

- › Made from elegant acacia wood
- › The traditional and consistent figuring only improves with age and care



### Acacia PLUS

Ø11.5cm

IC11203-AC

- › The larger size means less time between refills, and the wider mouth allows for larger spoons, making this salt pig more suitable for cooking, as well as serving



### Acacia DUO

Ø12.5cm

IC11204-AC

- › Features a divided container, perfect for pairing salt and pepper, or even just two varieties of salt to give your dishes that Instagram finish





## Electric Mills

- › Adjustable ceramic mechanism for a smooth grind from fine to coarse
- › Automatic LED light helps you see your grind size and amount, especially with light salts & spices
- › Easy to hold and use with one-hand operation, so you can mix and mill at the same time
- › Available in two styles - silver and black. Nicknamed "Table" and "Prep" based on the grips used to activate them, both styles are at home both in the kitchen or at elegant tableside service

Silver, Table  
**IC11105**

Black, Prep  
**IC11106**





# Salt 'N Pepper Mills

Stylish and functional, the Salt & Pepper Mill sets look stunning on any table. Features a ceramic mechanism with an adjustable grind. Light wood minimalist style to enhance any dining table.

- › Ceramic mechanism for a smooth grind
- › Adjustable grain size
- › Designed in Europe

## Chamonix

IC11101

A matched set with S and P markings on their tops for quick and easy identification.

## Vouvant

IC11102

Beech wood finish with colour-coded tops.



## Bayeux

Includes a matched wooden tray for display and organisation that will catch any loose salt or spices, keeping cupboards and tables tidy.

Natural

IC11103

Black

IC11104





## Wooden Utensils

Each Wooden Utensil is carved from a single piece of teak or acacia wood, and supplied in a natural finish.

- › Available in 3-jar set CDUs of 48
- › Eco-friendly - no chemicals, adhesives or toxic coatings applied



**Acacia Wood** Mixed 3-jar CDU set of 48  
**IC11500**

Condiment Spoon  
**IC11501**

Tea Spoon  
**IC11502**

Olive Spoon  
**IC11503**

Honey Server  
**IC11504**

Slotted Spoon  
**IC11505**

Deli Fork  
**IC11506**

Pâté Knife  
**IC11507**

Toast Tongs  
**IC11509**



## Teak Wood



Round Spoon  
**IC11510**

Jar Spoon  
**IC11511**

1tsp Small Measuring Spoon  
**IC11512**

1TBsp Large Measuring Spoon  
**IC11513**

Scoop  
**IC11514**

Dressing Spoon  
**IC11515**

Soda/Parfait Spoon  
**IC11516**



30cm Wooden Spoon  
**IC11601**

35cm Wooden Spoon  
**IC11602**

Pointed Wooden Spoon  
**IC11603**

30cm Flat Spatula  
**IC11604**

35cm Flat Spatula  
**IC11605**

40cm Crepe Spatula  
**IC11606**

20cm Rice Spoon  
**IC11607**

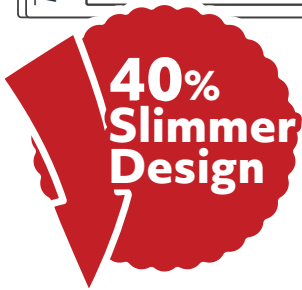
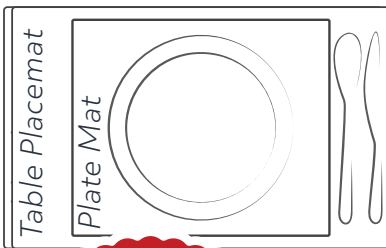
Ginkgo Salad Server Set  
**IC11608**



## Plate Mats

Now in a stylish compact size, perfect for cafes & contemporary plate settings, **Plate Mats** add the finishing touch for every occasion. Offering a sophisticated colour palette suitable for any dining aesthetic.

- Contemporary compact size
- Easy to clean, durable, and stain resistant
- Available in custom pack quantities (minimum quantities apply)
- Dimensions: 30 × 24cm



Confetti  
IC24001



Black Gingham  
IC24002



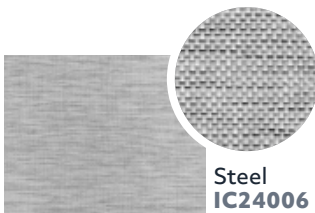
Denim  
IC24003



Black Bamboo  
IC24004



Grey Herringbone  
IC24005



Steel  
IC24006



Tan Basketweave  
IC24007



Black Basketweave  
IC24008



French Red  
IC24009



French Blue  
IC24010



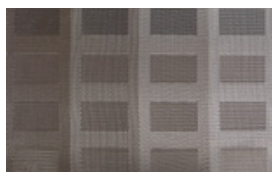
French Green  
IC24011



## Table Placemats

A great way to keep tabletops fresh and occasion appropriate. With fun and bright, traditional, or classic and elegant styles, these **Table Placemats** add a sophisticated aesthetic and table versatility.

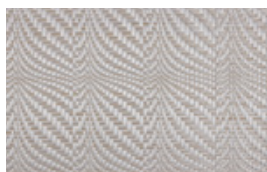
- › Easy to clean, durable and stain resistant
- › Available in custom quantities (Codes for set of 6 shown below)
- › Dimensions 45 × 30cm



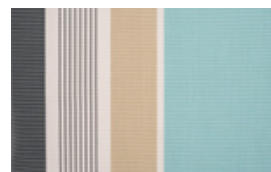
Shadows  
**IC23002**



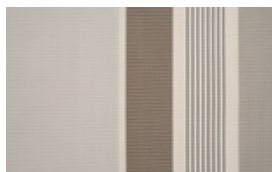
Classic Red  
**IC23009**



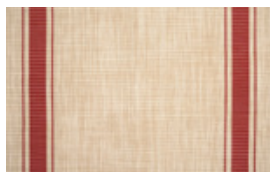
Classic Silver  
**IC23010**



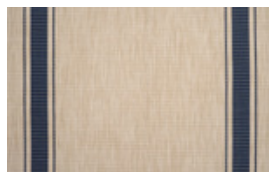
Ocean View  
**IC23012**



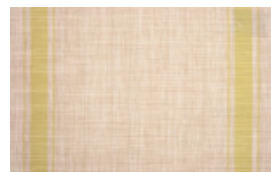
City View  
**IC23013**



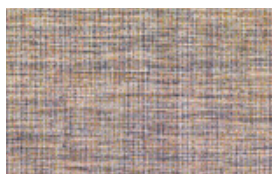
French Red  
**IC23014**



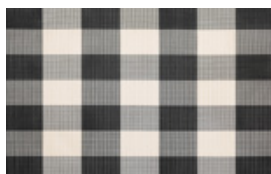
French Blue  
**IC23015**



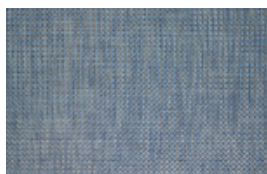
French Green  
**IC23016**



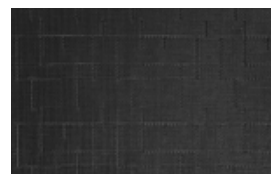
Confetti  
**IC23017**



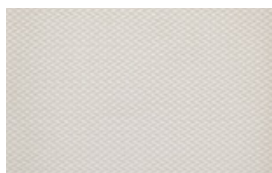
Black Gingham  
**IC23018**



Denim  
**IC23019**



Black Bamboo  
**IC23020**



Grey Herringbone  
**IC23021**



Steel  
**IC23022**



Tan Basketweave  
**IC23023**



Black Basketweave  
**IC23024**

# Stainless Steel Utensils

Durable, elegant, and reliable, these **Serving Utensils** are perfect for caterers, restaurants or the home cook.

- › Mirror-polished, high-quality stainless steel
- › Pre-packed specials available
- › Dishwasher safe



## Table Tongs

15cm <i>Small</i>	IC22203
24cm <i>Medium</i>	IC22204
30cm <i>Large</i>	IC22205

## Rose Gold Finish

15cm <i>Small</i>	IC22213
24cm <i>Medium</i>	IC22214







**Citrus Press**  
IC70000



**Serving Spoon**  
IC21001



**Slotted Spoon**  
IC21002



**Serving Ladle**  
IC21004



red*dot* award 2017  
winner

## Cold Brew

### IC62000

Winner of the prestigious Red Dot Design Award with 1350ml (up to 10 cups) capacity.

The **Cold Brew** features a smart reusable stainless steel filter to brew cold coffee, tea, or other infusions.

- › Heat & shock resistant borosilicate glass
- › Sealing rubber lid keeps coffee fresh for up to 2 weeks
- › 18/8 Stainless steel filter





## Digital Coffee Scale

### IC60301

- › Features precise measurements and drip-timer
- › Includes removable non-slip mat and instructions for perfect pourover coffee
- › Batteries included
- › OEM Options available (Minimum quantities apply)

## Coffee Dripper

600ml

IC62001

4 Cup

900ml

IC62002

6 Cup

The pour-over Coffee Dripper is a complete hot coffee solution that provides a fuller flavoured brew, and **does away with the need for expensive and wasteful bleached paper filters** that latch onto oils in the coffee that improve its taste, thanks to its **high quality, 18/8 stainless steel filter**. The carafe is **made from heat- & shock-resistant borosilicate glass** with marked measurements down the side that, along with the reusable filter, is **dishwasher safe**.



## Coffee Filters

Cone Shape

IC60102

Square Shape

IC60202

Eco friendly, reusable and made from stainless steel, this Coffee Filter fits most pour over coffee makers (Chemex, Hario, and more).

Enjoy smooth tasting coffee without the wastage of outdated, disposable paper filters.

# Tea Infuser

Allows a precise brew for that perfect cup of tea every time. The wide stainless steel tea infuser allows tea leaves to fully expand, ensuring the true and full flavour of loose leaf teas.

- › Heat & shock-resistant borosilicate glass
- › Easy to clean

800ml  
**IC60000**  
*Up to 6 cups*



1350ml  
**IC60001**  
*Up to 9 cups*





## 1500ml Carafe

IC61001

A modern carafe design, featuring a perforated stopper for fruit infusions, or iced drinks. The self-stopping lid opens automatically when pouring.

- › Made from heat and shock resistant borosilicate glass
- › Sized to make the best use out of fridge door space
- › 18/8 stainless steel lid
- › 1500ml capacity
- › Dishwasher safe



## French Rolling Pin

4cm Diameter **IC11401**

"French Stick" **IC11402**

5cm Diameter

- › One-piece solid wood with tapered ends
- › Engraved measurements for precise rolling



## Wooden Barware

A pair of wooden bar tools for both at-home enthusiasts and hospitality professionals. The **Citrus Reamer** and **Cocktail Muddler** are both carved from a single piece of wood with a natural finish that will suit any kitchen.

- › Easy to grip, even when muddling iced drinks or cold citrus
- › Made in Taiwan



Cocktail Muddler  
**IC11403**

Citrus Reamer  
**IC11404**





## Digital Kitchen Scale

**IC72000-WH**

- › Foldable design for compact, space-saving storage
- › Updated compliant design features safety screw on battery door
- › Weighs from 1g - 5kg
- › Tare function - add and weigh multiple ingredients in one bowl



## Seal & Pour



**IC43500-GN**

Pour spout with airtight lid.

- › Red Dot Design Award winning product
- › Designed and made in Sweden
- › Airtight lid keeps contents fresh and secure
- › Freezer safe - ideal for frozen veggies



## Scissors

Scissors for every occasion.

- › Ergonomic, rubberised soft-grip, non-slip handles
- › Stainless steel blades

## Poultry Shears

**IC71000**

Strong curved blades ideal for cutting through poultry and meats.

- › Serrated edge to prevent slipping
- › Safety lock for when not in use

## Kitchen Scissors with Sheath

**IC71001**

Ready for all household tasks, from trimming flowers to cutting herbs.

- › Features bottle opener & nut cracker
- › Includes safety sheath



## Garlic Press

**IC73101**

A more traditional method for crushing and mincing garlic with an easy-squeeze design

- › Large, easy to grip handles
- › Stainless steel crushing surface with large chamber to fit multiple cloves of garlic
- › Can be used even with unpeeled garlic
- › Flip-open design is easy to clean
- › Dishwasher safe





# Rasp Graters

- › Grate directly into bowl or onto meal
- › Non-slip rubber handle & pad
- › Etched blades for increased sharpness & longevity
- › Dishwasher safe

## Duo-Edge (Black)

IC73000

- › Versatility of course & fine grating edges on one grater



+

## Fine (Red)

IC73001

Fine-edged grater perfect for:

- › Parmesan & hard cheeses
- › Zesting citrus
- › Ginger & other roots
- › Chocolate



## Coarse (Green)

IC73002

Coarse-edged grater perfect for:

- › Cheddar & soft cheeses
- › Raw vegetables
- › Fruit



# Chef's Gloves

Professional quality oven gloves.

- › Protection from -42°C to 240°C
- › Fireproof Kevlar® stitching
- › Suitable in both commercial and domestic kitchens
- › Dishwasher safe



**Chef's Mitt Short**  
31cm

**IC15201**

**Chef's Mitt Long**  
38cm

**IC15202**

**Oven Glove**  
*with articulated fingers*

**IC15203**



## Chef's Blow Torch

**IC17005**

For finishing sous-vide, sushi and more.

- › Perfect for commercial kitchens and high-heat, high-capacity applications
- › Made to fit standard RVR butane cartridges
- › Made in Taiwan
- › Adjustable flame



## Chef's Torch

One of the most effective kitchen tools for that impressive meringue, a caramelised crème brûlée or finishing off pork crackling with a snap.

- › Instant trigger ignition
- › Adjustable flame
- › Child resistant unlock button
- › Burn time 30 minutes

Red

**IC17002-RD**

Blue

**IC17003-BL**







**Sink Roll Mat**  
**IC74000**

Ideal for extending workspaces in a quick roll. Silicone coated stainless steel bars, heat-resistant up to 250°C, make it ideal as a trivet for hot pans directly from the oven. Sturdy enough for heavy pots, but also provides an anti-slip surface for holding or air drying delicate crockery.

- › Rolled-out dimensions: 52cm x 34 cm
- › Fits over many sink styles and sizes
- › High-strength stainless steel inner
- › Heat resistant to 250°C
- › Space saving design

*Also available*

Pre-pack Special of 6  
**IC74000PP**



# Cooking Tongs

## Tongs DUO

Smart design, stainless steel hybrid tongs - featuring two surfaces:

- › Silicone to protect your non-stick pans
- › Steel to make handling meat precise & easy

Black **IC22301-BK**

Red **IC22302-RD**



## Tong Light PLUS

**IC22202**

Stainless steel 6-in-1 BBQ tool with removable torch.

- › Retractable claw for spatula
- › Extend claw for tongs
- › Cutting edge for spatula
- › Bottle opener function
- › Scraper edge to clean BBQ plate & grill
- › Natural light coloured LED torch, ideal for accurately viewing the cooking process
- › Batteries included



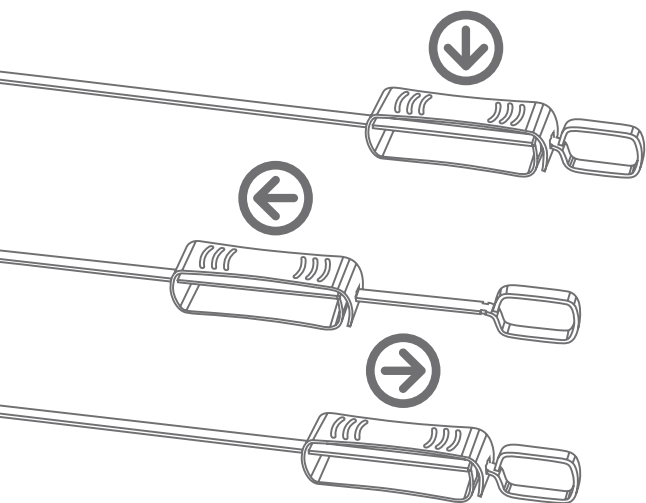


## BBQ Skewers

IC12202

Made of heavy-duty, dishwasher-safe stainless steel, **BBQ Skewers** come with a built-in slider to easily remove hot food without burning fingers. Simply move the slider down the skewer to effortlessly and cleanly remove food for eating.

- › Heat resistant handle, with slim, flat design.
- › Set of 5 Skewers







## Market Hamper

Perfect for grocery shopping and weekend markets, the **Market Hamper** is lightweight and collapsible, yet strong and durable with an oversized handle.

- › Interior pocket to hold loose items
- › Lightweight and collapsible
- › Dimensions: 44 x 26 x 24cm

Blue  
Olive

IC19402  
IC19404





## Market Tote

The perfect throw-all-in lifestyle bag for weekend markets, the gym, groceries or as a beach bag. With a wide variety of colours and patterns available, the **Market Tote** is the perfect lifestyle accessory.







Leaves  
IC19700



Black  
IC19703



Ochre  
IC19707



French Blue  
IC19711



## Heavy-duty, thick neoprene

- › Icon Chef's insulating neoprene is 4mm thick, making it more resilient than thinner competitors.

## Reinforced edge stitching

- › All Icon Chef Neoprene features a finished edge which not only looks great, it protects the neoprene inner.

## Tough Nylon

- › The Icon Chef **Easy Pack** and **Water Bottle Carrier** feature nylon carry straps, and the **Easy Pack** features nylon reinforced handles and zips.

## Quality Zips

- › Closure zips on the **Lunch Buddy**, **Easy Pack** and **Water Bottle Carrier** are not only consistent and smooth, but also feature easy-to-grip tabs, making them easy to open and close in a hurry, when wearing gloves, or with limited mobility.





## Wine Buddy

Made from high grade neoprene the fashionable **Wine Buddy** keeps a bottle of wine or beverage cool and easy to transport.

- › Stitched reinforced handle
- › Stores flat when not in use
- › Available in Single, or DUO size to fit an extra bottle - perfect for a picnic or a party

DUO Blue Stripe  
**IC13102**

Single Red  
**IC13004**

DUO Red  
**IC13104**

DUO Rainbow  
Parade  
**IC13107**

DUO Summer  
Party  
**IC13108**



## Easy Pack

Fun and fashionable, **Easy Pack** bags are the 'it' bag for carrying lunches or snacks. Features large zip top closure to keep items safe and secure plus an exterior zipped pocket for smaller, easy access items. Perfect for picnics, work, sports or events.

- › Insulated lining
- › Includes shoulder strap
- › 5L capacity



Retro  
**IC19201**



Op  
**IC19204**



Ice Cream Parade  
**IC19210**



## Featured Artist Tori Stowe

With a love for everything Australia, South African artist Tori Stowe's work is inspired by her regular trips to the sunburnt country. Known for bringing inspiration from all over the world to her work, her exclusive range for Icon Chef is the distillation of what the world loves the most about Down-Under, brought to a range of lifestyle products made from the same high-quality neoprene, zips and straps as our Icon Chef Buddy and Market range.



### Koalas



**Wine Buddy**  
**IC13014T**



**Lunch Buddy**  
**IC14012T**



**Water Bottle Carrier**  
*with shoulder carry strap*  
**750ml**  
**IC13307T**  
**500ml**  
**IC13407T**



**Market Tote**  
*with Utility Bag*  
**IC19708T**  
**Utility Bag only**  
*20.5 x 15 x 2cm*  
**IC19801T**





## Kangaroos



Wine Buddy  
IC13015T



Lunch Buddy  
IC14013T



Water Bottle Carrier  
*with shoulder carry strap*  
750ml  
IC13308T  
500ml  
IC13408T



Market Tote  
*with Utility Bag*  
IC19709T  
Utility Bag only  
20.5 x 15 x 2cm  
IC19802T



## Wildlife Scatter



Wine Buddy  
IC13016T



Lunch Buddy  
IC14014T



Water Bottle Carrier  
*with shoulder carry strap*  
750ml  
IC13309T  
500ml  
IC13409T



Market Tote  
*with Utility Bag*  
IC19710T  
Utility Bag only  
20.5 x 15 x 2cm  
IC19803T



# Featured Artist Michelle Pike

Icon Chef is proud to work with renowned Australian illustrator Michelle Pike. With a classically Australian sense of humour, and characters with personalities all of their own, Michelle's pieces bring a sense of free spirit and fun to a range of giftware made from the same high-quality neoprene, zips and straps as our Icon Chef Buddy range.



Wine Buddy  
*"The Long & Short Of It"*

**IC13012M**



Wine Buddy  
*"Unfinished Business"*

**IC13013M**



Water Bottle Carrier  
*"Up To His Neck In It"*

750ml  
500ml

**IC13301M**  
**IC13401M**



Water Bottle Carrier  
*"Unfinished Business"*

750ml  
500ml

**IC13302M**  
**IC13402M**



Water Bottle Carrier  
*"The Long & Short Of It"*

750ml  
500ml

**IC13303M**  
**IC13403M**





Lunch Buddy  
"Teamwork"

IC14010M



Lunch Buddy  
"Wash Day"

IC14011M



Oven Glove  
"Unfinished Business"

IC15010M





# ICON *Chef* Hand-Picked

Icon Chef is always on the hunt for the freshest ideas for the home & kitchen - sometimes we find great ideas we'd like to share with Australia from manufacturers that share our vision.

Icon Chef Select range is our way to bring these great ideas directly to you.

Icon Chef Hand-Picked is a brand new range that partners Icon Chef with small local and international brands, to bring a new collection of award winning and innovative products to Australia, New Zealand, and beyond.

All of the products in the Hand-Picked range have the same fresh, contemporary feel as Icon Chef's core range, and are hand-picked by the Icon Chef team.

With a shared vision of practicality, quality, and style, the Hand-Picked range is sure to be loved by customers.





## Travel Coffee Maker

### WB81015

Weekend Boulevard is the place between the office and the holiday, a men's giftware and lifestyle brand that's all about celebrating smart ideas, stylish accessories, and more days off.

Their first product introduced to the market is the Travel Coffee Maker. Sold in a gift box, and including a neoprene case, it features a high-quality stainless steel reusable filter, and is perfect for a coffee lover who values quality, everywhere, every time.

- › Stainless steel filter - No wasteful paper filters, and a fuller flavour.
- › Tough, water-resistant moulded neoprene case protects the set on the go.
- › Compact heat- and shock-proof borosilicate glass mug.
- › Stainless steel lid protects the case from spills, and acts as a coaster.



# OmniUtil Binz



GOOD DESIGN AWARD  
**LONG LIFE  
DESIGN AWARD**

Organise and clear up clutter with the award winning **Omnioutil Binz**.

Heavy duty and durable, these storage solutions are the ultimate in multi-function use around the kitchen, home or garden.

- › Cold and heat safe from -20°C to 120°C
- › Closed bin can bear up to 150kg
- › Food safe plastic
- › Made in Japan







## White

4 Litre	<b>IC16001-4L-WH</b>
8 Litre	<b>IC16002-8L-WH</b>
10 Litre	<b>IC16003-10L-WH</b>
20 Litre	<b>IC16004-20L-WH</b>



## Luxe Grey

4 Litre	<b>IC16001-4L-LG</b>
8 Litre	<b>IC16002-8L-LG</b>
10 Litre	<b>IC16003-10L-LG</b>
20 Litre	<b>IC16004-20L-LG</b>



## Black

4 Litre	<b>IC16001-4L-BK</b>
8 Litre	<b>IC16002-8L-BK</b>
10 Litre	<b>IC16003-10L-BK</b>
20 Litre	<b>IC16004-20L-BK</b>



## Navy Blue

4 Litre	<b>IC16001-4L-NV</b>
8 Litre	<b>IC16002-8L-NV</b>
10 Litre	<b>IC16003-10L-NV</b>
20 Litre	<b>IC16004-20L-NV</b>



## Olive Green

4 Litre	<b>IC16001-4L-OG</b>
8 Litre	<b>IC16002-8L-OG</b>
10 Litre	<b>IC16003-10L-OG</b>
20 Litre	<b>IC16004-20L-OG</b>



## Apricot

4 Litre	<b>IC16001-4L-AP</b>
8 Litre	<b>IC16002-8L-AP</b>
10 Litre	<b>IC16003-10L-AP</b>
20 Litre	<b>IC16004-20L-AP</b>



## Green

4 Litre	<b>IC16001-4L-GN</b>
8 Litre	<b>IC16002-8L-GN</b>
10 Litre	<b>IC16003-10L-GN</b>
20 Litre	<b>IC16004-20L-GN</b>



## Pink

4 Litre	<b>IC16001-4L-PK</b>
8 Litre	<b>IC16002-8L-PK</b>
10 Litre	<b>IC16003-10L-PK</b>
20 Litre	<b>IC16004-20L-PK</b>



## Purple

4 Litre	<b>IC16001-4L-PL</b>
8 Litre	<b>IC16002-8L-PL</b>
10 Litre	<b>IC16003-10L-PL</b>
20 Litre	<b>IC16004-20L-PL</b>



At the heart of every Betty Bossi product is a single goal: culinary delight!

A leading Swiss culinary company, Betty Bossi has been teaching Swiss people how to cook since 1956 and now bring their clever products to Australia. With their smart design, innovative products, and creativity, every Betty Bossi product is sure to delight customers.

They have developed reliable recipes and, innovative kitchen appliances that make cooking more efficient and inspiring.

# *Betty Bossi*

## 1.

### **Pastry**

Unique tools for preparing pastries on  
**Pages 126 & 127**

## 2.

### **Veggies**

Home of the original Veggie Twister,  
and a range of other healthy eating  
staples from **Pages 128-130**

## 3.

### **Sweets & Sauces**

Swiss innovation that makes some of  
the most complicated kitchen tasks a  
snap on **Pages 132 & 133**





# Snack Rollers

With just a roll through the dough, these tools are for baking lovers. Patterns, and cuts dough for a professional flourish at home. Quick to use, with no sharp parts so even kids can join in the baking fun.

- › Dishwasher safe & BPA-free

## Grissini Roller

**BB25168**

Bake fresh Grissini, cheese straws and other breadsticks in a convenient and efficient way.



## Jalousie Roller

**BB55013**

Makes beautiful, delicious lattice pastries or mini sausage rolls quickly, easily, and fresh at home.



## Nacho Roller

**BB55009**

Easily make fresh crunchy triangle crackers in the comfort of home. Delicious with dips, salsa or guacamole.





## Dumpling Maker Set

**BB55021**

Easily make all kinds of delicious fresh dumplings from all over the world. Just insert dough, fill, seal, and the perfect dumplings are ready. Whether it's tortellini, momo or Asian dumplings, delight guests with a variety of delicacies - without stress or effort.

- › Set contains 7.5cm and 10cm dumpling makers
- › Dishwasher safe & BPA-free



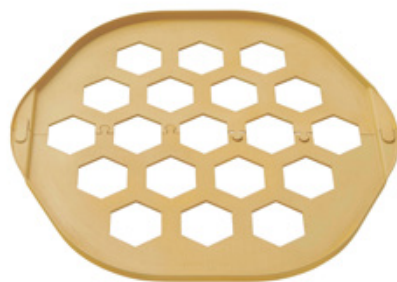
## Mini Pizza Tool

**BB55038**

The **Mini Pizza Tool** makes decorating pizzas in unique ways fun and simple. Simply press down into your dough to cut, and then decorate away! The guides on top will keep the edges of the dough clear for a perfect crust, every time.

One press makes up to 19 mini pizzas, ready to decorate.

- › Designed in Switzerland
- › Make great snacks for entertaining
- › Great creative fun for kids
- › Dishwasher safe & BPA-free



# Slicers & Spiralisers

Betty Bossi's crowd favourites, the **Veggie Twister** spiralizer range turns vegetables into piles of 'spaghetti' like twirls in seconds for salads, 'pasta' or creative snacks. Can be used with cucumber, carrot, zucchini, sweet potato and more.

- › Designed in Switzerland
- › Stainless steel blades and BPA-free plastic components

## Midi Spiralizer

**BB55023**

Not too big, not too small and therefore ideal for daily use. The **Midi Spiralizer** is the best compromise in terms of ease of use, versatility and size.

- › Includes recipe booklet
- › Includes blade attachments for spaghetti and tagliatelle strands



**National Breast Cancer Foundation**  
CORPORATE FUNDRAISER

## Veggie Twister Classic

Green  
Pink

**BB55514**  
**BB55515PK**

## CDU of 24

Green  
Pink  
Mixed

**BB55514PP**  
**BB55515PKPP**  
**BB55516MIXPP**

12 green, 12 pink

The original handheld **Veggie Twister**, compact and space saving for smaller kitchens. Just twist to create healthy and delicious veggie spirals in seconds.

- › Makes spaghetti and spiral strands
- › Child friendly, enclosed and protected blade





## Veggie Sheet Slicer

BB55024

Slice wafer-thin sheets of zucchini, potatoes, apples and more with the innovative **Veggie Sheet Slicer**. Ideal for creative, healthy versions of lasagna, gratin or pies. A culinary "wow" factor for low-carb cooking. Already receiving widespread attention from influencers, publications and retailers alike.

- › Ideal for vegan & healthy eating
- › Dishwasher safe & BPA-free



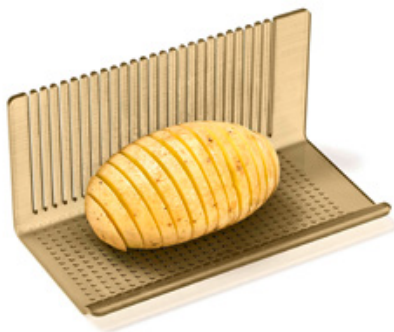
## Veggie Drill

**BB55002**

Effortlessly whip up healthy treats with the **Veggie Drill**. Conveniently hollow out all kinds of fruit and vegetables to easily add savoury or sweet fillings.

Make eye-catching yet healthy and fresh hors d'oeuvres, baked apples, potato bakes and more.

- › Includes four different sized drill attachments & recipe book
- › Dishwasher safe & BPA-free



## Hasselback Potato Tool

**BB55027**

The **Hasselback Potato Tool** is a guiding tool for creating delicious Hasselback potatoes. With guided slots for the knife to follow, slicing even cuts is easy and simple.

- › Designed in Switzerland
- › Stopper prevents knife from cutting all the way through
- › Features grip on the bottom to hold vegetable in place
- › Dishwasher safe & BPA-free

*Also Available*

CDU of 8

**BB55027PP**





## Grater Lid

**BB55036**

Grate and slice directly into the bowl - featuring innovative tough, plastic blades for slicing or grating.

The reversible design fits bowls or containers up to 25cm in diameter, and holds firmly thanks to its anti-slip surface and handle.

- › Fits bowls up to 25cm diameter
- › Non-slip surface ensures a good grip on the bowl
- › Suitable for grating or slicing a wide variety of raw and cooked vegetables and fruits
- › Dishwasher safe & BPA-free







## Cookie Press

BB55037

- › Easy to use and child friendly with no sharp parts
- › Includes press & 6 cookie moulds
- › Includes recipe booklet
- › Dishwasher safe & BPA-free

Simply designed, the **Cookie Press** has two chambers for differently hued cookie doughs and six cookie moulds to choose from, making fun, unique designs at home. It features an easy one-handed press motion to 'stamp' the cookies onto a sheet, making it ideal for the whole family.



## Apple Grater

**BB55022**

Grates apples fast for easy fresh bircher muesli, to sprinkle on salads, fill mini pastries and more. The apple is safely grated in a closed compartment, removing the core and collecting the juices.

- › Includes recipe booklet
- › Child friendly with no sharp parts
- › Dishwasher safe & BPA-free



## Sauce Maker

**BB55020**

There's nothing quite like homemade mayonnaise, aioli, tartare or hollandaise. Whip up a batch in record time with the super fast, easy and light **Sauce Maker**. Designed to create fresh sauces in 1 minute, the **Sauce Maker** is ideal for both butter and oil based sauces.

- › Includes recipe booklet
- › Dishwasher safe & BPA-free





Takumi [Ta-ku-mi] - A Japanese term referring to an artisan or craftsperson of the highest order.

Nestled in Japanese culture, Takumi knives are made with 67 layers of folded steel. The gentle folds of the knives resemble flowing waters and eternal mountains - peace and strength as the perfect pairing.

Each knife is unique in size and ability to glide effortlessly through food prep, from Utility to Paring knives to artisan tools like single edge Sashimi knives. Together they are unbeatable.

For chopping, dicing or slicing for quick prep to ingredients worthy of display,  
a Takumi blade is ready at hand.





1.

### **Series Sets**

Pre-assembled collections by Takumi  
from **Pages 136-138**

2.

### **Solo Knives**

Create your own story of Takumi  
Knives from **Pages 139-141**

3.

### **Learn More**

Learn more about the purpose of each  
Takumi knife on **Pages 142 & 143**

## Takumi Master Series

### TK5PCSET

Five carefully selected pieces that can answer any challenge, and a matching knife block to display them proudly. Each knife blade is made from 67 layers of folded steel, and features a hand-laid mosaic motif in each handle.

This set contains:

- › 20cm Chef's Knife
- › 20cm Slicing Knife
- › 20cm Bread Knife
- › 18cm Santoku Knife
- › 9cm Paring Knife
- › Matching Magnetic Knife Block





## Takumi Artisan Series

### TK3PCSET

This 3pc **Artisan Series Set in gift box** includes three key knives that no culinary enthusiast should be without. Takumi's **Chef's Knife** for all-purpose chopping and dicing, the Takumi's **Slicing Knife** for slicing roast meats or portioning melons and the Takumi **Utility Knife** for nimble versatility. Each knife blade is made from 67 layers of folded steel with a mosaic motif in each handle.

This set contains:

- › 20cm Chef's Knife
- › 20cm Slicing Knife
- › 12cm Utility Knife
- › Gift Box





## Takumi Focus Series

### TK2PCSET

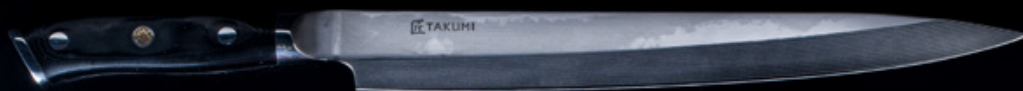
An essential pairing designed to complement each other beautifully, the **Takumi Focus Series** will help home cooks elevate their passion for cooking. Consisting of the Takumi **Santoku Knife** for chopping, slicing and dicing and the Takumi **Paring Knife** for the smallest of tasks. Each knife blade is made from 67 layers of folded steel with a mosaic motif in each handle.

This set contains:

- › 18cm Santoku Knife
- › 9cm Paring Knife
- › Gift Box



## 27cm Sashimi Knife in Gift Box



Right-handed  
TK270S

Left-handed  
TK270SL



Takumi's Sashimi Knife is an artisan tool for the ultimate knife connoisseur. The single-sided edge slices cleanly, keeping the fish in the best condition for perfect, wafer-thin portions.

Made with 67 layers of folded steel and emblazoned with a mosaic inlay on the handle - the mark of craftsmanship.

# Takumi Solo Series

Create your own Takumi story from our range of individual knives. Each knife blade is made from 67 layers of folded steel with a mosaic motif hand-laid in each handle.



**9cm Paring Knife**  
*in Gift Box*  
**TK090P**



**12cm Utility Knife**  
*in Gift Box*  
**TK120U**



**18cm Nakiri Knife**  
*in Gift Box*  
**TK180N**



**18cm Santoku Knife**  
*in Gift Box*  
**TK180S**





20cm Serrated Bread Knife  
in Gift Box  
**TK200B**



20cm Chef's Knife  
in Gift Box  
**TK200C**

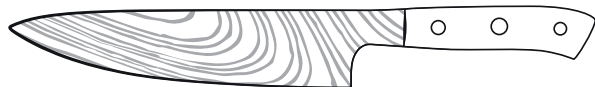


20cm Slicing Knife  
in Gift Box  
**TK200S**

# About Takumi Knives

## 20cm Chef's Knife

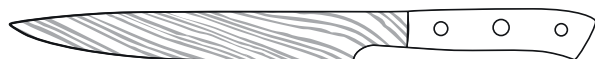
**Used for:** Multi-purpose, but especially good for consistent chopping and dicing.



Similar to the renowned French Chef's Knife, the 20cm Chef's Knife features a long, deep, curved blade, this multi-purpose knife is balanced and comfortable for a traditional rocking and chopping methods when cutting, while coming to a sharp point for detailed cutting or deboning.

## 20cm Slicing Knife

**Used for:** Filleting or carving meat



The 20cm Slicing Knife features a long, shallow curve and thin blade, similar to a Sashimi knife, but with a traditional symmetrical V shaped profile. Similar to a sashimi knife, this knife is suited for long slicing strokes, rather than any repetitive chopping or rocking.

## 20cm Serrated Bread Knife

**Used for:** Bread, roots, or soft fruits and vegetables



The 20cm serrated bread knife is perfect for getting through thick, tough bread crust. A less known trick is to use a serrated knife for smooth-skinned, soft fruits like tomato, where another knife would crush the flesh if enough pressure were applied to break through the skin.

## 12cm Utility Knife

**Used for:** A broad range of kitchen tasks



The 12cm Utility Knife is a master of practicality, able to handle most kitchen tasks, and is traditionally considered complementary to the 20cm Chef's Knife.

## 9cm Paring Knife

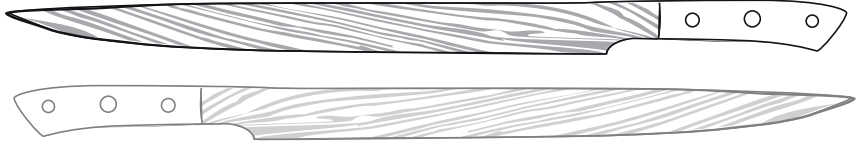
**Used for:** Finely detailed fruit carving, deboning or vegetable slicing



The 9cm Paring Knife is an essential for finely detailed work, able to be comfortably held with a variety of grips thanks to its smaller handle, and its sharp, defined point makes it perfect for detailed cuts.

## Left & Right Handed 27cm Sashimi Knives

**Used for:** Slicing raw fish or meat



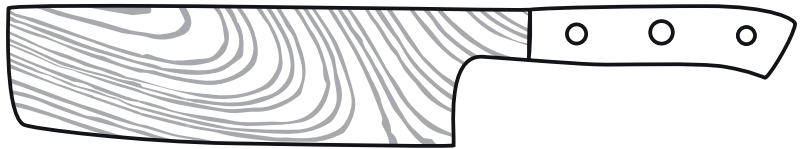
These specialised knives are extra-long to allow cuts to be made in a single stroke, rather than the traditional chopping or rocking method.

Sashimi knives are left- or right-handed because rather than a symmetrical V profile, these blades feature one flat side, and one angled side.

When used with the correct dexterity, this allows the user to see the precise point of contact between the blade and the cut of fish.

## 18cm Nakiri Knife

**Used for:** Chopping Vegetables



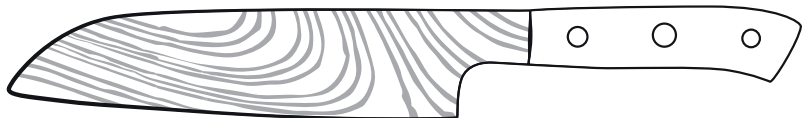
The Nakiri Knife may, at first glance, look like an intimidating, heavy butcher's cleaver, but this delicate knife is anything but.

The thin, wide blade and near-flat cutting edge is actually designed for flawlessly consistent chopping of vegetables.

Using a less common back-and-forth chopping method where the knife is lifted completely from the cutting board, the Nakiri knife excels at wafer-thin slicing.

## 18cm Santoku Knife

**Used for:** Multi-purpose



The Santoku knife is the quintessential Japanese Chef's Knife. The name literally translates to "Three Virtues", and it lives up to the name.

The blade's curve towards the point is suited for cutting, the long steady shape excels at slicing, and the flat heel of the blade, near the handle, is perfect for chopping.

While the unique shape and wide point takes some getting used to for unfamiliar chefs, the Santoku Knife's utility makes it an indispensable tool for anyone who takes the time to master it.





Located in the French cutlery capital, Thiers, the Laguiole Jean Néron range has been authentically crafted in France for over three generations.

Made of high-quality stainless steel and contemporary or classic bistro coloured resin, olive wood or stainless steel handles, Laguiole Jean Néron's cutlery pieces will complement any table setting or entertaining area.

Each cutlery piece is decorated with the famous Laguiole bee insignia.

**We are the sole Australian distributor for Laguiole Jean Neron cutlery.**

**Authentic Laguiole Jean Neron cutlery is made exclusively in France.**



1.

### **French Giftware**

Authentic traditional gifts from **Pages 146-151**

2.

### **The Elegant Range**

Elegant French diningware from **Pages 154-173**

3.

### **Servingware**

Beautiful carving sets and pastry servers with a French touch from **Pages 174-177**

4.

### **Laguiole France**

Serving boards with a French spirit from **Pages 178-183**





## Coloured Resin Handles

### *The Elegant Range Gifts*

Nothing says true French elegance like Laguiole cutlery.

This range serves as an elegant, timeless and versatile style statement for the table. Handcrafted in France using only the highest quality stainless steel, olive wood and coloured resins.







## 6pc. Cheese Sets *In Wooden Gift Box*

Each Set Contains:  
1 × Full-sized Cheese Cleaver,  
1 × Full-sized Cheese Knife &  
4 × Mini Cheese Knives



Mix Colour Flash  
**JN-60544NP-MX1**



Flash Red  
**JN-60544NP-RD**



French Blue  
**JN-60544NP-FB**



Light Horn  
**JN-60544P-LH**



Black  
**JN-60544P-BK**

## 6pc. Butter & Pâté Knife Sets *in Wooden Gift Box*



Mix Colour Flash  
**JN-60545NP-MX1**



Flash Red  
**JN-60545NP-RD**



Light Horn  
**JN-60545P-LH**



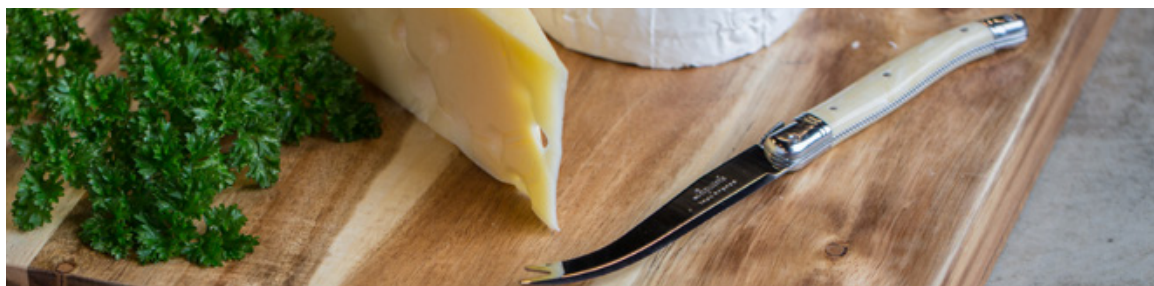
Black Horn  
**JN-60545P-BH**



Black  
**JN-60545P-BK**



## Single Cheese Knife *in Wooden Gift Box*



Flash Red  
**JN-10539NP-RD**



Light Horn  
**JN-10539P-LH**



Black  
**JN-10539P-BK**

## 2 Piece Cheese & Pâté Set *in Wooden Gift Box*



Mixed Colour Flash  
**JN-20539NP-MX1**



Flash Red  
**JN-20539NP-RD**



French Blue  
**JN-20539NP-FB**



Light Horn  
**JN-20539P-LH**



Black Horn  
**JN-20539P-BH**



Black  
**JN-20539P-BK**



### 3pc. Cheese Sets in Wooden Gift Box



Mixed Colour Flash  
JN-30544NP-MX1



Flash Red  
JN-30544NP-RD



French Blue  
JN-30544NP-FB



Light Horn  
JN-30544P-LH



Black Horn  
JN-30544P-BH



Black  
JN-30544P-BK





# Mini Cheese Knife

## Gift Sets



An essential for the 2023 gifting season, Laguiole Jean Neron's new Mini Gift range feature a cute new wooden storage and display box, with a range of mini cutlery at a price point that is unbeatable for authentic, French Made cutlery.

The perfect, elegant stocking stuffer and sure to be a favourite for Secret Santas excited to give something the recipient will cherish.

## Mini Cheese Knife



Flash Red  
JN-10572NP-RD

## Mini Cheese Knife & Pâté Spreader Set



Mixed Colour Flash  
JN-20572NP-MX1

## Mini Cleaver, Cheese Knife & Pâté Spreader Set



Mixed Colour Flash  
JN-30572NP-MX1



Black  
JN-10572P-BK



Black  
JN-20572P-BK



Black  
JN-30572P-BK



Light Horn  
JN-10572P-LH



Light Horn  
JN-20572P-LH



Light Horn  
JN-30572P-LH



Olive Wood  
JN-10572-OL



Olive Wood  
JN-20572-OL



Olive Wood  
JN-30572-OL



# Salad Servers

A Salad Server set that is the ultimate for luxurious whimsical dining, whether it be making an impression for guests or that relaxing Sunday party.



**Flash Red**  
**JN-20549NP-RD**



**Flash Orange**  
**JN-20549NP-OR**



**French Blue**  
**JN-20549NP-FB**



**Flash Purple**  
**JN-20549NP-PL**



**Flash Yellow**  
**JN-20549NP-YL**



**Light Horn**  
**JN-20549P-LH**



**Black**  
**JN-20549P-BK**



**Stainless Steel**  
**JN-23549P-SS**



**Olive Wood**  
**JN-20549-OL**





## Coloured Resin Handles

### *The Elegant Range Cutlery*

Nothing says true French elegance like Laguiole cutlery.

This range serves as an elegant, timeless and versatile style statement for the table. Handcrafted in France using only the highest quality stainless steel, olive wood and coloured resins.



**24pc. Gift Box Set**  
*in lidded gift box*

Set Contains:  
6 × Steak Knives,  
6 × Forks,  
6 × Soup Spoons,  
6 × Dessert Spoons, and  
1 × bonus NBCF-partnered Pâté Knife  
in a hinged wooden gift box



Mix Colour Flash  
**JN-74000NP-MX1**



Flash Red  
**JN-74000NP-RD**



Light Horn  
**JN-74000P-LH**



Black  
**JN-74000P-BK**





## 12pc. Cutlery Sets *in wooden gift box*

Contains 6 × Steak Knives  
and 6 × Forks

Mix Colour Flash  
**JN-12540NP-MX1**

Flash Red  
**JN-12540NP-RD**

French Blue  
**JN-12540NP-FB**

Light Horn  
**JN-12540P-LH**

Black Horn  
**JN-12540P-BH**

Black  
**JN-12540P-BK**

## 24pc. Cutlery Sets *in wooden cutlery tray*

Contains 6 × Steak Knives, 6 × Forks,  
6 × Soup Spoons and 6 × Dessert Spoons

Mix Colour Flash  
**JN-54000NP-MX1**

Flash Red  
**JN-54000NP-RD**

French Blue  
**JN-54000NP-FB**

Light Horn  
**JN-54000P-LH**

Black Horn  
**JN-54000P-BH**

Black  
**JN-54000P-BK**





## 6 Piece Steak Knife Sets



Mix Colour Flash  
JN-72900NP-MX1



Flash Red  
JN-72900NP-RD



French Blue  
JN-72900NP-FB



Light Horn  
JN-72900P-LH



Black Horn  
JN-72900P-BH



Black  
JN-72900P-BK

*Also Available in  
a Wooden Gift Box*



Mix Colour Flash  
**JN-60540NP-MX1**



Flash Red  
**JN-60540NP-RD**



French Blue  
**JN-60540NP-FB**



Light Horn  
**JN-60540P-LH**



Black Horn  
**JN-60540P-BH**



Black  
**JN-60540P-BK**



## **6pc. Table Knife Sets** *in wooden gift box*

Mix Colour Flash  
**JN-60553NP-MX1**

Light Horn  
**JN-60553P-LH**

Black  
**JN-60553P-BK**



## **6pc. Fork Sets** *in wooden gift box*

Mix Colour Flash  
**JN-60541NP-MX1**

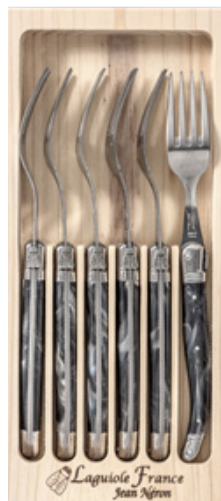
Flash Red  
**JN-60541NP-RD**

French Blue  
**JN-60541NP-FB**

Light Horn  
**JN-60541P-LH**

Black Horn  
**JN-60541P-BH**

Black  
**JN-60541P-BK**





## 6pc. Soup Spoon Sets in wooden gift box

Mix Colour Flash  
JN-60542NP-MX1

Flash Red  
JN-60542NP-RD

French Blue  
JN-60542NP-FB

Light Horn  
JN-60542P-LH

Black Horn  
JN-60542P-BH

Black  
JN-60542P-BK



## 6pc. Coffee Spoon Sets in wooden gift box



Mix Colour Flash  
JN-60543NP-MX1

Flash Red  
JN-60543NP-RD

Light Horn  
JN-60543P-LH

Black  
JN-60543P-BK





## Cheese Knives

Red	<b>JN-10539NP-LRD</b>
Orange	<b>JN-10539NP-LOR</b>
Yellow	<b>JN-10539NP-LYL</b>
Green	<b>JN-10539NP-LGN</b>
Blue	<b>JN-10539NP-LBL</b>
Purple	<b>JN-10539NP-LPL</b>
Light Horn	<b>JN-10539P-LLH</b>
Black Horn	<b>JN-10539P-LBH</b>
Black	<b>JN-10539P-LBK</b>

## Butter/Pâté Knives

Red	<b>JN-10545NP-LRD</b>
Orange	<b>JN-10545NP-LOR</b>
Yellow	<b>JN-10545NP-LYL</b>
Green	<b>JN-10545NP-LGN</b>
Blue	<b>JN-10545NP-LBL</b>
Purple	<b>JN-10545NP-LPL</b>
Light Horn	<b>JN-10545P-LLH</b>
Black Horn	<b>JN-10545P-LBH</b>
Black	<b>JN-10545P-LBK</b>
Pink S/E	<b>JN-10545NP-LPK</b>
Special Edition	



## Mini Cheese Knives

Red	<b>JN-10572NP-LRD</b>
Orange	<b>JN-10572NP-LOR</b>
Yellow	<b>JN-10572NP-LYL</b>
Green	<b>JN-10572NP-LGN</b>
Blue	<b>JN-10572NP-LBL</b>
Purple	<b>JN-10572NP-LPL</b>
Light Horn	<b>JN-10572P-LLH</b>
Black	<b>JN-10572P-LBK</b>

## Mini Cleavers

Red	<b>JN-10574NP-LRD</b>
Orange	<b>JN-10574NP-LOR</b>
Yellow	<b>JN-10574NP-LYL</b>
Green	<b>JN-10574NP-LGN</b>
Blue	<b>JN-10574NP-LBL</b>
Purple	<b>JN-10574NP-LPL</b>
Light Horn	<b>JN-10574P-LLH</b>
Black	<b>JN-10574P-LBK</b>





## *The Elegant Range* **Loose Cheese Knife CDUs**

CDU pieces and colours are predetermined with opening order of all 24 piece CDUs.  
Additional orders can include chosen loose quantities or colours to match a chosen aesthetic or arrangement.



24pc Mixed Colour Cheese Knife CDU  
**JN-10539-LSET**

24pc Mixed Colour Butter/Pâté Knife CDU  
**JN-10545-LSET**

24pc Mixed Colour Mini Cheese Knife CDU  
**JN-10572-LSET**

24pc Mixed Colour Mini Cheese Cleaver CDU  
**JN-10574-LSET**



## The Elegant Range Cutlery CDU

CDU pieces and colours are predetermined with opening order. Colours and items will be equally distributed across the 8 resin colour options.

All loose Laguiole Jean Neron cutlery can be custom ordered in loose quantities or colours to match retailer aesthetic or arrangement in additional orders. Colour options include the 9 resin colours, stainless steel or olive wood options.

256 mixed cutlery CDU  
with acrylic display unit

**JN-10540-LSET**

50 × 25 × 36cm









## Steak Knives

Red	<b>JN-10540NP-LRD</b>
Orange	<b>JN-10540NP-LOR</b>
Yellow	<b>JN-10540NP-LYL</b>
Green	<b>JN-10540NP-LGN</b>
Blue	<b>JN-10540NP-LBL</b>
Purple	<b>JN-10540NP-LPL</b>
Light Horn	<b>JN-10540P-LLH</b>
Black Horn	<b>JN-10540P-LBH</b>
Black	<b>JN-10540P-LBK</b>



## Soup Spoons

Red	<b>JN-10542NP-LRD</b>
Orange	<b>JN-10542NP-LOR</b>
Yellow	<b>JN-10542NP-LYL</b>
Green	<b>JN-10542NP-LGN</b>
Blue	<b>JN-10542NP-LBL</b>
Purple	<b>JN-10542NP-LPL</b>
Light Horn	<b>JN-10542P-LLH</b>
Black Horn	<b>JN-10542P-LBH</b>
Black	<b>JN-10542P-LBK</b>



## Table Forks

Red	<b>JN-10541NP-LRD</b>
Orange	<b>JN-10541NP-LOR</b>
Yellow	<b>JN-10541NP-LYL</b>
Green	<b>JN-10541NP-LGN</b>
Blue	<b>JN-10541NP-LBL</b>
Purple	<b>JN-10541NP-LPL</b>
Light Horn	<b>JN-10541P-LLH</b>
Black Horn	<b>JN-10541P-LBH</b>
Black	<b>JN-10541P-LBK</b>



## Coffee Spoons

Red	<b>JN-10543NP-LR</b>
Orange	<b>JN-10543NP-LOR</b>
Yellow	<b>JN-10543NP-LYL</b>
Green	<b>JN-10543NP-LGN</b>
Blue	<b>JN-10543NP-LBL</b>
Purple	<b>JN-10543NP-LPL</b>
Light Horn	<b>JN-10543P-LLH</b>
Black Horn	<b>JN-10543P-LBH</b>
Black	<b>JN-10543P-LBK</b>



## Loose Cheese Knives

Single Cheese Knife  
JN-13539P-LSS

Butter/Pate Knife  
JN-13545P-LSS



# Stainless Steel Handles

## *The Elegant Range - Cheese*



### Gift Boxed Cheese Sets

Single Cheese Knife  
**JN-13539P-SS**

2pc. Cheese Set **JN-23539P-SS**  
*Cheese Knife & Pâté Knife*

3pc. Cheese Set **JN-33544P-SS**  
*Cheese Knife, Pâté Knife & Mini Cleaver*



### Butter/Pâté Knives

Set of 6 in Gift Box  
**JN-63545P-SS**



## **Stainless Steel Handles**

### *The Elegant Range - Dining*



#### **Loose Cutlery**

Steak Knife	<b>JN-13540P-LSS</b>
Table Fork	<b>JN-13541P-LSS</b>
Soup Spoon	<b>JN-13542P-LSS</b>
Coffee Spoon	<b>JN-13543P-LSS</b>



## Steak Knives

Set of 6 in New Crescent Block  
**JN-72900P-SS**

Set of 6 in Gift Box  
**JN-63540P-SS**



## Cutlery Sets of 6 in Wooden Gift Box

Set of 6 Table Knives  
**JN-63553P-SS**

Set of 6 Forks  
**JN-63541P-SS**

Set of 6 Soup Spoons  
**JN-63542P-SS**

Set of 6 Coffee Spoons  
**JN-63543P-SS**



## Dining Sets in Wooden Gift Box

12pc. Cutlery Set **JN-12540P-SS**  
6 × Steak Knives, 6 × Forks

24pc. Cutlery Set **JN-54000P-SS**  
6 × Steak Knives, 6 × Forks,  
6 × Soup Spoons, 6 × Coffee Spoons

24pc. Cutlery Set **JN-74000P-SS**  
in Lidded Gift Box  
6 × Steak Knives, 6 × Forks,  
6 × Soup Spoons, 6 × Coffee Spoons  
1 × Bonus Pâté Knife



## **Loose Cheese Knives**

Cheese Knife

**JN-10539-LOL**

Mini Cheese Knife

**JN-10572-LOL**

Loose Stock

**JN-10545-LOL**

Mini Cheese Cleaver

**JN-10574-LOL**





# Olive Wood Handles

## *The Elegant Range - Cheese*



### Gift Boxed Cheese Sets

Single Cheese Knife  
**JN-10539-OL**

2pc. Cheese Set  
Cheese Knife & Pâté Knife  
**JN-20539-OL**

3pc. Cheese Set  
Cleaver, Cheese & Pâté Knife  
**JN-30544-OL**



### Butter/Pâté Knives

Set of 6 in Gift Box  
**JN-60545-OL**

## Olive Wood Handles

### *The Elegant Range - Dining*



#### **Loose Cutlery**

Steak Knife	<b>JN-10540-LOL</b>
Fork	<b>JN-10541-LOL</b>
Soup Spoon	<b>JN-10542-LOL</b>
Coffee Spoon	<b>JN-10543-LOL</b>
Butter/ Pâté Knife	<b>JN-10545-LOL</b>



## Steak Knives in Store & Display Block

Set of 6 in New Crescent Block  
**JN-72900-OL**

Set of 6 in Wooden Gift Box  
**JN-60540-OL**



## Gift-Boxed Cutlery Sets of 6

Set of 6 Forks  
**JN-60541-OL**

Set of 6 Soup Spoons  
**JN-60542-OL**

Set of 6 Coffee/Dessert Spoons  
**JN-60543-OL**



## Gift Boxed Dining Sets

12pc. Cutlery Set **JN-12540-OL**  
6 × Steak Knives, 6 × Forks



24pc. Cutlery Set **JN-54000-OL**  
6 × Steak Knives, 6 × Forks,  
6 × Soup Spoons, 6 × Coffee Spoons



24pc. Cutlery Set **JN-74000-OL**  
in Lidded Gift Box  
6 × Steak Knives, 6 × Forks,  
6 × Soup Spoons, 6 × Coffee Spoons  
1 × Bonus Pâté Knife



# Carving Sets

An authentic French-made **Carving Set** that makes an impression guests will never forget. Ready with ever-lasting sharpness for exceptionally thin slices of Sunday roast or that special occasion lunch.



Flash Red **JN-20547NP-RD**



Flash Orange **JN-20547NP-OR**



Flash Blue **JN-20547NP-BL**



Light Horn **JN-20547P-LH**



Black **JN-20547P-BK**



Olive Wood **JN-20547-OL**

# Pastry & Dessert Sets

This selection of pastry servers, including Cake Slicers and Bread Knives, and gift sets all beautifully gift boxed will be a dining staple for years to come and will always brighten up serving and entertaining. From sourdough to the celebratory cake, this set will add a touch of class to any dining environment.

## Cake Slicer

Flash Green **JN-10548NP-GN**  
Light Horn **JN-10548P-LH**



## Bread Knife

Light Horn **JN-10629P-LH**  
Olive Wood **JN-10629-OL**



## 2pc. Cake Knife & Bread Slicer Set

Light Horn **JN-20629P-LH**



## 6pc. Cake Fork Sets in wooden gift box



Flash Red  
**JN-60546NP-RD**



Black  
**JN-60546P-BK**

## 6pc. Ice Cream Spoon Set in wooden gift box



Light Horn  
**JN-60559P-LH**

Black  
**JN-60559P-BK**

## Flash Purple Pet Spoon for Cats

**JN-10559NP-PL**

Give pets the treats they deserve with this lavish **Pet Spoon**. Handcrafted with high-quality stainless steel and coloured resin, and is beautifully presented in a wooden box for easy gift giving.



## Utility Sets

The Utility and Kitchen Sets will be a practical staple for years to come and will brighten up prepping and cooking for the home. From tomatoes, to peeling potatoes, this set will fly through repetitive kitchen tasks with ease.



### 3pc. Kitchen Set

Black

**JN-30510-P**

- › Contains tomato knife, utility knife & peeler
- › Comes in wooden gift box



### 4pc. Kitchen Set

Mix colour flash

**JN-40147-MX1**

Olive

**JN-40133-OL**

Black

**JN-40150-PP**

Contains tomato knife, potato knife, kitchen knife & peeler

- › Comes in rustic raw cardboard box



# Oyster Knives

Open oysters effortlessly with this **Oyster Knife** range.  
Made in France with a stainless steel blade.



Full tang 25/10 Stainless steel  
blade with Black polypropylene  
handle

**JN-10417-OY**



Full tang blade, wooden handle,  
brass bolster

**JN-10418-OY**



Natural wooden handle

**JN-10415-OY**



Full tang 25/10 stainless steel  
blade with oyster cracking notch

**JN-10427-OY**



Black Polypropylene Handle

**JN-10420-OY**



# Laguiole France Serving Boards

Constructed from high-quality Acacia Wood in a range of both timeless classic and sharp modern designs, the Laguiole France range creates elegance at any occasion

- › Laguiole France logo on one side



## Serving Board Care Oil

- › A great on-the-counter add-on product with Laguiole France's Serving Board range
- › Make the most of retail counter space with its 20 x 29cm footprint CDU
- › 100% Food-grade white mineral oil, sourced from the USA

200ml Bottle  
**LF-91000**

CDU of 12 bottles  
**LF-91000PP**



# OEM Projects

Through Laguiole France, Oceania Trade Link have produced a range of customised wooden boards made from the same high-quality Acacia wood as the rest of the Laguiole France range, perfect as a corporate gift or for special occasions.

From custom branding and laser engraving to entirely custom designs, our in-house design team are able to accomplish almost any vision.

Please reach out to your local OTL Sales Agent or head office directly to learn more.



## Acacia Wood Serving Boards

**NEW** Rustic



Made from high quality Acacia wood, these serving boards are perfect for entertaining with charcuterie or cheese boards.

Available in a wide range of sizes, there's a board available for any occasion - from an intimate after-dinner cheese & wine experience for two, all the way up to an Instagram-worthy platter for an entire party.



**Small**  
20 × 30 × 1.5cm

**JN-99401**

**Medium**  
25 × 40 × 1.5cm

**JN-99402**

**Large**  
30 × 45 × 1.5cm

**JN-99403**



## Round Paddleboard

### Extra Small

ø25.5 × 35.5 × 1.5cm

### Small

ø30.5 × 40.5 × 1.5cm

**JN-97003**

**JN-97002**

### Medium

ø40 × 51 × 1.5cm

**JN-97000**



### Extra-Large

ø50 × 60 × 1.5cm

Featuring a new rounded-edge finish for 2024

**JN-99301**

**NEW**



## Pebble

- › This smooth-edged board promises to improve its organic style as it ages. Well suited to large displays thanks to its soft drop-off edges, this design makes it easier to create busy displays that don't look cluttered.



### Small

30.5 × 23 × 1.5cm

### Medium

41 × 27 × 1.5cm

### Large

55 × 30 × 1.5cm

**JN-99201**

**JN-99202**

**JN-99203**





## Pizzaiolo

JN-99101

56 × 35 × 1.5cm

Taking cues from the classic pizza peel, this paddleboard with handle combines a large usable serving area, with traditional style







## Long Serving Boards

Highly versatile, these **Long Serving Boards** are perfect for serving canapes, antipastos, breads or desserts. Constructed from acacia wood, these are highly durable and perfect for entertaining, catering or to feed a crowd.



**Small**  
60 × 15 × 2cm

**JN-95000**



**Medium**  
60 × 20 × 2cm



**JN-95001**

**Large**  
80 × 20 × 2cm

**JN-95002**



**NEW**

## Swept-Side Board

31.5 × 21.8 × 1.5cm

**JN-99501**







## Reversible Carving/ Chopping Boards

This **Reversible Serving Chopping Board** is perfect for carving or serving. One side has a deep channel edge, keeping hold of all those precious succulent roasting juices. The other is flat for chopping or serving canapes, antipastos, breads or desserts.

- › Dense, closed-grain acacia wood provides longevity

**Rounded Edge**

25 × 35 × 1.8cm

**JN-94103**

**Large**

50 × 38 × 4cm

**JN-94001**



## Ash Wood Paddle Boards



**Small**

50.8 × 15.2 × 1.5cm

**JN-96102-FR**

**Large**

53.3 × 17.8 × 1.5cm

**JN-96103-FR**



Designed and crafted in Japan, Kyocera is one of the world leaders in advanced ceramic kitchen tools.

Kyocera ceramic blades are made from advanced, high-tech zirconium oxide: a pure, dense, and unrelenting material that is 50% harder than steel and second only to diamond in hardness.

The strong and dense blades hold a sharp edge longer than steel and yet light in the hand, for those repetitive cutting tasks.





1.

### **Slicers & Peelers**

The easiest introduction to high-tech ceramics in the kitchen from **Pages 186-189**

2.

### **Ergonomic Series**

Ceramic chef's knives and sets, designed in harmony with the human from **Pages 182-199**

3.

### **Limited Series**

The ultimate in award winning Japanese chef's knives on **Page 200**

4.

### **Innovation Series**

The ultimate in award winning Japanese chef's knives on **Page 201**

5.

### **Ceramic Accessories**

Lifestyle accessories and unique applications of Kyocera's high-tech ceramics from **Pages 202-205**



# Slicers & Mandolines

## 6 Piece Easy Slicer & Grater Set

### CSN-550EXP

Kyocera's **6 Piece Slicer Set** has a wide variety of blades and attachments to make any slicing or grating task easy. Each set includes an adjustable slicer (black), a julienne slicer (red), a coarse grater (green), a handguard and a two-piece container for easy storage. Quickly slice, julienne, grate or garnish your favourite foods. With an advanced ceramic blade that will never rust, this slicer set will stay razor-sharp 10x longer than a conventional blade set.

Perfect for cabbage, carrots, cucumber, onions, potatoes, ginger, cheese and more.



## Adjustable



Adjustable to four preset thicknesses, Kyocera's adjustable slicer is the perfect "go-to" slicer. Use a single mandolin for both wafer thin "stained-glass" slices in delicate rosettes, and more substantial slicing for bakes and ratatouilles.



Like all Kyocera ceramic slicers, the adjustable slicer includes a hand-guard for safety and to securely hold food.



Black  
Red

**CSN-202-BK**  
**CSN-202-RD**

## Double-Edged



Produce twice the slice in half the time taking advantage of the back and forth motion of a slicer. Lightweight and easy to use to create perfect, even slices of fruits or vegetables for a salad, stir-fry, au gratin or tart.



- › Includes a handguard to hold food securely and protect fingers
- › Rustproof and dishwasher safe on the top shelf
- › 1.5mm slice thickness



Black  
Red  
Yellow

**CSN-152-NBK**  
**CSN-152-NRD**  
**CSN-152-NYL**

## Julienne



Make perfect matchstick vegetables quicker, safer and easier with this Ceramic Julienne Slicer. Comfortable ergonomic handle, ideal for everyday use. Food slides easily across the ceramic teeth, to produce beautiful julienne strips in seconds. Perfect for julienning carrots, zucchini, potatoes and more.



Black  
Red  
Yellow

**CSN-182S-NBK**  
**CSN-182S-NRD**  
**CSN-182S-NYL**



## Ceramic Peelers



### Rod Handle Ceramic Peeler

Unlike other vegetable peelers, these **Ceramic Peelers** will stay razor-sharp 10 × longer than a conventional metal blade. Comfortable to use and easy to hold in hand, this peeler is ideal for any repetitive peeling task.

- › Two side eye corers to remove any fruit or vegetable imperfections.
- › Rust-proof & dishwasher safe on the top rack

Black  
**CP-10-NBK**  
Red  
**CP-10-NRD**  
Orange  
**CP-10-NOR**

Yellow  
**CP-10-NYL**  
Green  
**CP-10-NGN**  
Blue  
**CP-10-NBL**



## Dual Blade Peeler

This vertical **Dual Blade Peeler** is lightweight for maximum control and comfort for either hand. Its ultra-sharp dual ceramic blades can peel even the smallest fruit and vegetables. Includes an eye corer to remove imperfections.

- › Rustproof and dishwasher safe on the top rack

Black  
**CP-11-BK**  
Red  
**CP-11-RD**



## Soft-Touch Peeler

**CP-15NA BK**

Featuring an angled edge, the **Soft Touch Peeler** is lightweight, and features a soft grip texture for maximum control and comfort in either hand. Its ultra-sharp ceramic blade precisely peels even the smallest fruit and vegetables. Includes two eye corers for ambidextrous use.

- › Rustproof and dishwasher safe on the top rack



## The Perfect Peeler

**CP-20**

Three peelers in one, this versatile peeler rotates to a vertical, horizontal and 45-degree position depending on your peeling needs. Unlike other vegetable peelers, **The Perfect Peeler** will stay razor-sharp 10x longer than a conventional metal blade.

- › Rust-proof & dishwasher safe on the top rack



## Paring Knife & Peeler Set

A great introduction to advanced ceramic, this 2 piece set features an **8cm Paring Knife** and **Dual Edge Peeler**.

The Paring Knife is the ultimate cutting tool for small fruits and vegetables, peeling prawns or herbs such as garlic.

The **Dual Edge Peeler** is ideal for any peeling task in the kitchen.

- › Dishwasher safe on the top rack as the ceramic blades will never rust.
- › Conveniently packaged together, as the perfect pair for any home cook.



Black  
**FK-075CP11BK**



Red  
**FK-075CP11RD**



Green  
**FK-075CP11GN**

## Utility Knife & Peeler Set

This 2-piece set includes two essential, ultra-sharp tools for the kitchen:

A **11cm Utility Knife** and the **Rod Handle Peeler**.

The **Utility Knife** is the ultimate cutting tool for slicing boneless meat, bagels and buns, and chopping fruit and small vegetables.

The **Rod Handle Peeler** is ideal for any peeling task in the kitchen.

- › Dishwasher safe on the top rack as the ceramic blades will never rust.



Black  
**FK-110CP10BK**



Red  
**FK-110CP10RD**



Green  
**FK-110CP10GN**

## Santoku Knife & Peeler Set

A great advanced ceramic kitchen set, this 2-piece set features a **14cm Santoku Knife** and the **Rod Handle Peeler**.

The **Santoku Knife** is an essential all-purpose kitchen knife for dicing and mincing and all-round kitchen prep. The **Rod Handle Peeler** is ideal for any peeling task in the kitchen.

- › Dishwasher safe on the top rack as the ceramic blades will never rust.



Black  
FK-140WHCP10NBK



White  
FK-140WHCP10NWH



Red  
FK-140WHCP10NRD



Orange  
FK-140WHCP10NOR



Yellow  
FK-140WHCP10NYL



Blue  
FK-140WHCP10NBL



Purple  
FK-140WHCP10NPU



# Accessory Sets

## Bar Board Set

This 3 piece set features a 7.5cm Ceramic Prep Knife and Cutting Board Set and a protective Knife Sheath. The Prep Knife is essential for small fruits and vegetables like mushrooms, strawberries, radishes, bananas etc. The non-slip cutting board is reversible for use on both sides.

Great for an entertaining bar, picnics, or any activity that requires easy space-saving preparation.

Black	<b>FK076CB10-BK</b>
Red	<b>FK076CB10-RD</b>
Yellow	<b>FK076CB10-YL</b>
Green	<b>FK076CB10-GN</b>



## Utility Knife & Sheath Set

### FK-095S WH-BK

The ultimate cutting tool for indoor or outdoor prep. Perfect for slicing fruits, vegetables, boneless meats and fish. Ideal for the home kitchen, camping, picnics or fishing. The Ceramic Utility Knife is ultra-sharp, light-weight, and will never rust. The knife sheath is made of heavy plastic, ready to withstand the elements.



## Camping Knife & Sheath Set

### CKT-105 WH

The new Ceramic Camp Kitchen Knife, the ultimate cutting tool ideal for camping, fishing, hiking or picnics. The ergonomic soft textured handle provides for a comfortable and highly controlled grip. The knife is ultra-sharp, light weight, and will never rust making it perfect for outdoor use. The knife sheath is made of heavy-duty nylon and features a Velcro safety strap and belt loop for quick and easy access.



# Knife Sets

Whether introducing friends & family to the wonders of ceramic, or seeking the perfect gift, these sets are an excellent starting point for ceramic knives.



## 3 Piece Knife Set

Black  
**FK-3PC-WHBK**  
Red  
**FK-3PC-WHRD**

Set contains:

- › 16cm Santoku Knife
- › 12cm Utility Knife
- › 8cm Paring Knife

## 2pc. Sakura Gift Set 160-110 SPK

Cherry blossoms, sakura, are a symbolic flower of the spring and the beautiful nature of life. Beautifully displayed in a gift box, the Sakura Knife Set with cherry blossom coloured handles and blades is the perfect gift for loved ones.

Set contains:

- › 16cm Santoku Knife
- › 10cm Utility Knife



# Ergonomic Series

## White Blade

Kyocera's original ergonomic series was created with ergonomics and ease of handling in mind. The handles are tactile and ergonomically molded to fit the hand, making cutting easier, safer, and less taxing.

With a classic black and white colour scheme, these knives are perfect for the home and commercial environments.

### Benefits of a Ceramic Blade

- › **Precision Cutting**  
Ultra-lightweight blade, crafted in Japan
- › **Sharp**  
Stays sharper 10 times longer than steel
- › **Pure**  
No metal ions transferred to food  
No risk of rust on the blade  
Fruit & vegetables won't brown as quickly



Revolutionise food prep with a Ceramic Paring Knife. The perfect size to trim, slice and peel small produce such as fruit, garlic and herbs.

The Ceramic Utility Knife is the ultimate cutting tool for everyday kitchen prep that requires precise slicing of fruits, bread buns, vegetables and boneless meats.

Effortlessly slice through tender tomatoes and create wafer-thin slices with the Micro-serrated Utility Knife. Ideal for any fruit or vegetable that has a tough outer skin yet soft core to glide through food effortlessly.

8cm Paring Knife  
**FK-075 WH-BK**

7.5cm Prep Knife  
**FK-076 WH-BK**

11cm Utility Knife  
**FK-110 WH-BK**

11cm Medium Santoku Knife  
**FK-115 WH-BK**

12.7cm Micro-serrated Utility Knife  
**FK-125N WH-BK**

13cm Slicing Knife  
**FK-130 WH-BK**



A Nakiri knife is a traditional Japanese vegetable knife, recognisable by its rectangular blade.

The entire flat edge of the blade strikes the cutting board at once, chopping vegetables and herbs in one move, reducing cutting fatigue.



The meaning of 'Santoku' explains what this knife is best used for: 'three virtues' or 'three uses' of chopping, dicing and mincing. This all-purpose Santoku Knife can handle all these jobs with ease. The knife is also particularly adept at creating very thin slices of foods, particularly useful for aesthetically pleasing vegetables and seafood.

Chefs must work with the best blades to allow for superior precision and skill. A Chef's Knife is the most used knife in the kitchen. The popular 18cm and 20cm lengths translate to faster, comfortable slicing in high-quantity tasks in the kitchen, like slicing, dicing and chopping.

14cm Santoku Knife  
**FK-140 WH-BK**

15cm Nakiri Knife  
**FK-150N WH-BK**

16cm Chef's Santoku Knife  
**FK-160 WH-BK**

18cm Professional Chef's Knife  
**FK-180 WH-BK**

18cm Serrated Slicing/Bread Knife  
**FK-181 WH-BK**

20cm Professional Chef's Knife  
**FK-200 WH-BK**

## Fresh Ideas *Full Colour Palette*

Add style, colour, and cheer to the kitchen with these fresh, vibrant colours.

Express your own personality with Kyocera's Fresh Ideas range.



### 14cm Santoku Knife

White	FK-140 WH-WH
Red	FK-140 WH-RD
Yellow	FK-140 WH-YL
Green	FK-140 WH-GN
Blue	FK-140 WH-BL
Purple	FK-140 WH-PU
NBCF Pink Special Edition	FK-140 WH-SE

## 8cm Paring Knife

White

FK-075 WH-WH

Red

FK-075 WH-RD

Orange

FK-075 WH-OR

Yellow

FK-075 WH-YL

Green

FK-075 WH-GN

Blue

FK-075 WH-BL



## 11.4cm Utility Knife

White

FK-110 WH-WH

Red

FK-110 WH-RD

Orange

FK-110 WH-OR

Yellow

FK-110 WH-YL

Green

FK-110 WH-GN

Blue

FK-110 WH-BL







# Ergonomic Series

## *Black Blade*

This series features a black ceramic blade, made from black zirconium oxide. Created from an innovative hot-isostatic firing process, this ceramic offers even greater durability and remain sharper than other Kyocera blades.

7.5cm Paring Knife  
**FK-075 BK-BK**



11.4cm Utility Knife  
**FK-110 BK-BK**



12.7cm Micro-serrated  
Utility Knife  
**FK-125N BK-BK**



13cm Slicing Knife  
**FK-130 BK-BK**



14cm Santoku Knife  
**FK-140 BK-BK**



15cm Nakiri Knife  
**FK-150N BK-BK**



16cm Chef's Santoku Knife  
**FK-160 BK-BK**



18cm Professional  
Chef's Knife  
**FK-180 BK-BK**





# Limited Series *Made in Japan*

Winner of the prestigious Red Dot Design Award, the Limited Series was inspired by traditional Japanese craftsmanship and Kyocera's own rich Japanese cultural heritage. The premium dark pakka wood handle and steel bolster and rivets represent the traditional style of Japanese cutlery. Also featuring black ceramic blades made from black zirconium oxide, offering further durability from an innovative hot-isostatic firing process and remaining sharper longer than traditional white ceramic blades.



12.7cm  
Slicing Knife  
**LTD-130 BK**



14cm  
Santoku Knife  
**LTD-140 BK**



16cm  
Chef's Knife  
**LTD-160 BK**



16cm  
Nakiri Cleaver  
**LTD-161N BK**



18cm Professional  
Chef's Knife  
**LTD-180 BK**





**NEW**  
for 2024

# Innovation Series *White Blade*

Featuring a seamless, tapered handle with shaped details that make knives easier to grip, these lighter-than-ever high performance innovationWHITE kitchen knives from Kyocera are a dream to use.

The new Innovation handle shape is deceptively simple, featuring detailing in the handle profile like a specially rounded underside that maintains comfort while being easier to use with a wider variety of cutting techniques.



11cm Utility Knife  
**TK-110 WH-BK**



14cm Santoku Knife  
**TK-140 WH-BK**



16cm Santoku Knife  
**TK-160 WH-BK**

# Knife Sharpening & Honing

Ceramic's hardness is so exceptional that it can be used for honing and sharpening steel knives - our range of ceramic sharpeners for steel knives will help customers' traditional steel knives keep up with their ceramic favourites.

## Rod Sharpener & Honer *for Steel Knives*

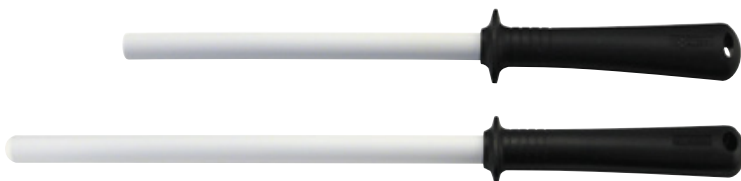
- › Two-functions: Ridged side for sharpening & smooth side for honing

15.25cm

**CSW-12**

22.85cm

**CSW-18**



## Ceramic wheel sharpeners *for Steel Knives*

- › A familiar home sharpening format that forms an excellent, long-lasting edge

Ceramic Wheel Sharpener  
**RSN-20 BK EXP**

Fiskars X Kyocera Rollsharp  
**RS-20FP**



## Sonic Wave Sharpener *for Steel Knives*

**SS-30 EXP**

- › Advanced ceramic grindstone with sonic wave technology



## Electric Diamond Blade Sharpener *for Ceramic Knives*

**DS-38**

A user-friendly and controlled knife sharpener is the simple home solution to resharpen and refresh ceramic kitchen knives. Easy to clean and includes a replacement diamond grinding stone for future use. Keeps knives in peak condition at home.

- › Removes chips and microchips from ceramic knives up to .5mm deep
- › Suitable for left or right-handed use.
- › Guided slot for precision sharpening





Black

CM-20C BK



Red

CM-20C RD

## The Everything Mill

The **Everything Mill**'s grinding mechanism is made from an advanced ceramic that will never rust and will provide long life performance. The clever upright design of the mill will keep your shelves & counters clean from residual grinds. Great for coarse salt, peppercorns, sesame seeds, flax seeds, mustard seeds, dried oregano, celery seeds, red pepper flakes, cumin seeds and more.

## Dual Mill

### CM-25D-BK

- › Advanced, non-reactive ceramic grinding mechanism that will never absorb and flavors from the spices, providing fresh and long-lasting results
- › Easy to operate with an adjustable dial (tighten or loosen) for grind preference (coarse to fine)
- › Space-saving, compact design
- › Includes caps for both sides, keeping surfaces clean when not in use
- › Dishwasher safe

Save table space with this versatile "dual" spice mill. Features dual grinding mechanisms that are made from an advanced ceramic that will never rust or react to spices, providing long-lasting performance. The acrylic container reservoirs make it easy to see when it's time to refill.

Great for coarse salts, wet salts, peppercorns, sesame seeds, flax seeds, mustard seeds, dried oregano, celery seeds, any dried herb leaves, red pepper flakes, parsley flakes, cumin seeds or more.





# Ceramic Accessories

## Dish Graters

Traditionally known as ginger graters, these unique shredding tools, made from an advanced ceramic close in hardness to diamond, will make grating roots or vegetables a snap. A silicone ring underneath holds the grater in place while in use.



Small size ø9.6cm  
**CY-10**



Medium size with pouring nose ø16cm  
**CD-18**

## Hand-Held Ceramic Multi Grater

**CMG-25**

The **Ceramic Multi Grater** makes it easy to grate garlic, ginger, chocolate or hard cheese. Ingredients can be grated with an up-and-down motion since the teeth cut both ways.



## 7cm Ceramic Scissors

**CSL-07 WH BK**

Chemically inert, anti-magnetic and anti-static, these **Ceramic Scissors** are a favourite in professional environments where precision and purity are critical - from medical applications to degustation kitchens. Long lasting sharpness for clean, straight cuts - every time.



# Ceramic Travel Mugs



The perfect travel mug for commuting to the office, school, attending outdoor activities or just relaxing at home.

- › Spill proof safety lock with a one handed flip top.
- › Keep liquids hot for up to 6 hours or cold for up to 12 hours with double walled vacuum insulation.
- › Slim exterior design which can fit most cup holders and a removable spill-proof, ice-stopping insert for convenience.
- › One-handed opening mechanism with safety lock

Silver - 350ml  
Black - 350ml  
Silver - 500ml  
Black - 500ml

**MB-12F-SS**  
**MB-12F-BK**  
**MB-17F-SS**  
**MB-17F-BK**



moHA! was founded in Switzerland and is inspired by innovation. moHA! is passionate about enhancing the art of food preparation and their focus and attention to the smallest of details distinguishes them from the rest.



# moHA!

swiss smart design

1.

## **Accessibility**

Unique easeware solutions that help with day-to-day tasks on **Pages 208 & 209**

2.

## **Peelers**

MoHA!'s innovative peeler designs that rethink a kitchen staple on **Pages 210 & 211**

3.

## **Presses, Mills & Slicers**

Slice, dice, grate, grind and crush - Swiss ideas for preparing food at quantity from **Pages 212-215**

4.

## **Specialty Serving**

Specialty utilities for all occasions from **Pages 214-216**

5.

## **Hospitality Supply**

Accessories and protection, perfect for commercial kitchens on **Page 217**

6.

## **Swiss Smart Ideas**

MoHA!'s unique Swiss innovations from **Pages 218-221**

# Accessibility Items

Through moHA!, we're proud to stock a wide range of items for customers and their friends and family with limited mobility, making it easy to open jars, cans, bottles & more.

## "Duo+" Safety Can & Jar Opener MH60609

No sharp edges when opening cans as the **Duo Safety Can and Jar Opener** cuts the outer rim of the can. A vacuum release function makes opening jars easy. Ideal for those with arthritic symptoms or weaker hands.



## "Twisty" Bottle & Beer Opener

- › Large, textured grip

Black  
MH60506

Red  
MH60516



## "Ezy Open" Jar & Bottle Opener MH60714

Adjustable arm fits most jar and bottle lids from 25mm to 102mm. Large comfortable grip - makes opening tight jars easy for small hands or limited motion.



## "Apple 16" Apple Slicer

**MH25209**

Making tarte tatin, apple pie or fresh fruit for the lunch box, the **Apple 16** corer and slicer will quickly and easily core and slice apples into 16 even wedges.



## "Mango" Mango Cutter

**MH25302**

Preparing mango has never been easier than with the **"Mango"**. Ultra sharp blades and non-slip handles removes the mango pit while wasting as little fruit as possible.



## "Speedy" Food Chopper

**MH15009**

The **Speedy Chopper** makes quick work of food prep. Chops a variety of vegetables and fruit with just a few pulls of the handle in just a few seconds. Includes stainless steel cutting blades.



## "Aromatic" Herb Chopper

**MH15029**

Chopping herbs has never been quicker or easier. With a unique "roll" motion, this compact chopper makes quick work of basil, parsley, coriander and more.



## "Reverso" Peelers

This smart peeler easily converts from a vertical position to a horizontal position with a simple sliding motion. Choose the most ergonomic position to match the specific vegetable or fruit. Three styles to choose from:



### **Green** *Veggie* **MH45614**

- › Straight blade with potato eye remover



### **Red** *Fruit* **MH45616**

- › Serrated blade with zester





## "Pela" Peelers

The 'Y' shaped **Pela Peeler** range makes short prep work for either hand. Features a wider, more comfortable ergonomic handle with a potato eye remover on both sides. Choose the perfect peeler for everyday peeling, prepping pasta sauces and purees or a finishing julienne garnish.



**Black**  
*Universal Peeler*  
**MH45709**



**Red**  
*Serrated Peeler*  
**MH45716**



**Orange**  
*Julienne Peeler*  
**MH45720**

## Slicers

### **NEW** "Cut Box" Fruit & Veggie Box Slicer

**MH25239**

Turn vegetables into sticks effortlessly, ready for the fryer or to enjoy fresh. MoHA's smart new Cut Box comes with 3 cutter options (Thick-cut, French-fries and Wedges) that neatly slot together for compact storage.

The set also includes a non-slip base to keep things stable, even when slicing tough vegetables or fruit.

No matter the appetite, the Cut Box can match a vegetable with a cut.



### "Veggie V" Compact Slicer with V-Blade

**MH25207**

Compact, adjustable with no loose parts, the **Veggie V Slicer** has all the cutting elements integrated. Easily adjustable to slices from less than 1mm to up to 4mm thick. Includes a handguard and non-slip base.



### "Mandolinetta" 4-in-One Slicer, Grater & Residue Holder

**MH25219**

Create perfectly sliced vegetables every time. Interchangeable blades can be quickly changed to a slicer, coarse grater, bircher grater and cheese grater all in one unit. Includes a compact holder with external measurements.





# Graters & Mills



## "Ginger" Grater

**MH20009**

Ideal for ginger, horseradish, nutmeg and even zesting of citrus, moHA!'s **Ginger Grater** is extremely compact and effortless with a quicker clean up.

## "Gusto" Nutmeg Grater

**MH36074**

With a revolutionary closure system and a perforated grid for a smooth grind, the **Gusto Grater** can grate up to four nutmegs simultaneously.



## "Presto" Butter Mill

**MH20001**

The patented **Butter Mill** spreads straight from the fridge. Simply place the butter inside and twist for spreadable butter. No more bread tearing or breaking crackers with too cold, too rigid butter.

- › Convenient lid makes storing in the fridge a breeze

Dishwasher safe.

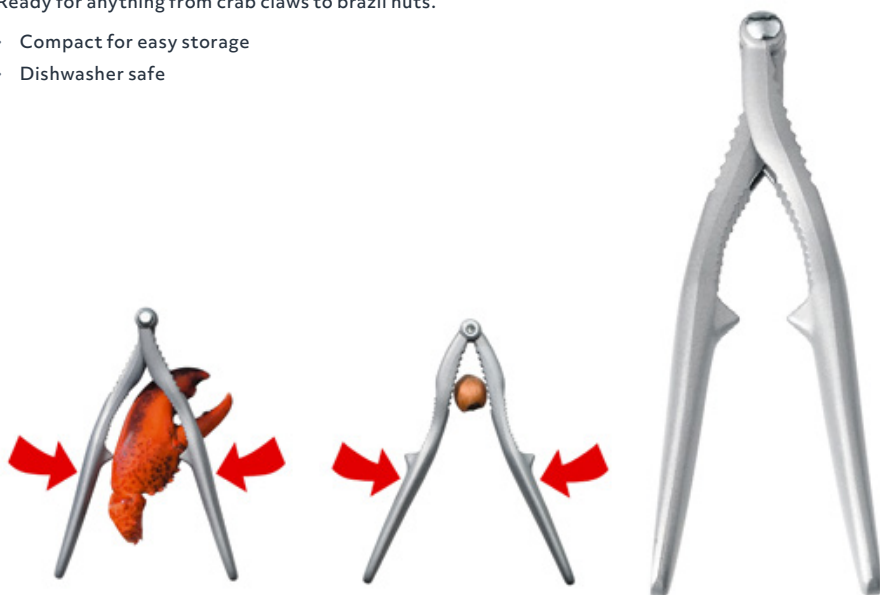
## "Mare" Seafood & Nut Cracker

**MH62525**

A favourite for the holidays this reversible cracker is ideal for both nuts and seafood.

Ready for anything from crab claws to brazil nuts.

- › Compact for easy storage
- › Dishwasher safe



## "Scampo" Seafood Shears

**MH25503**

Unique reverse cutting method allows the **Scampo Shears** to open shellfish while leaving the meat intact. Ideal for prawns, crabs, lobsters and crayfish. Includes a shell cracker and bottle opener in the design.







# Ice Cream Scoops

Made from solid, die-cast alloy with a non-stick coating to easily form and eject ice cream scoops.

Also suitable to portion biscuit dough, meatballs or melon.



## "Ice Cool"

- › Easy-release design that leverages grip temperature for easy scooping

60mm  
**MH51811**

50mm  
**MH51711**



## "Gelati"

- › Fixed scoop design with added leverage for icy desserts

Red  
**MH51706**

Charcoal  
**MH51709**

## "Nomad" *Clip-on Kitchen Timer*

**MH81299**

- › Features a 360 degree rotating digital screen
- › Times up to 99 minutes
- › Easy to see start/stop button



## "Neo Protector" *Oven Mitt Set*

**MH81524**

Compact yet effective, this **Neo-Protector Oven Mitt** provides superior safety when handling hot pots and pans and can be stored away in the smallest of kitchens.

- › Heat resistant up to 220 degrees
- › Non-slip material for a safer grip



## "Protecto" *Cut-resistant Gloves*

**MH81632**

High performance cut-resistant gloves for extra protection when using mandolins, slicers or shucking oysters. Perfect for commercial kitchens or for extra safety at home. Ambidextrous fit and available in two sizes.

- › European certified level 5 cut resistance.
- › Designed in a medium-large size for a comfortable fit for a wide range of wearers



## "Potato" Foldable Potato Masher

**MH31619**

Unique, heavy-duty folding design potato masher lays flat for easy space-saving storage, even in a cutlery drawer - simply squeeze to transform.



## "Crack It" Egg Cracker

**MH80501**

**Crack It** is perfect for cracking soft-boiled eggs. Just pull the spring loaded bulb upwards, release, and the top of the egg will be neatly removed.





## "Silicook" *Foldable Pot Lid & Trivet*

**MH82099**

- › Features a quartered design that allows you to lift to season without uncovering the whole dish
- › Fits pots & pans up to 32cm - ideal for woks
- › Dishwasher safe, and folds up for convenient storage



## "Spala" *Tined Spatula*

**MH50738**

Easily slide and turn food with ease. Stainless steel turner with a silicone spatula end to protect pans.



## Jam & Honey Spoon

**MH80549**

Smart spoon design holds itself on the rim of a jar of jam or honey with no mess. The horizontal design makes it easy to lift and reach across the breakfast table comfortably.

Made from high quality stainless steel.



## "Aroma" Cooking Infuser

**MH38055**

The easy way to prepare a bouquet garni for infusing stock, soup and dishes with herbs and aromas. Easy to remove prior to consumption.

No more twigs!

- › Diameter: 10cm



## "Eggy" Egg Separator

**MH80504**

The **Eggy Egg Separator** makes it easy and clean to quickly separate egg whites from yolks. Polished stainless steel finish and dishwasher safe.



## "Butter Fresh"

*Butter Dish*

**MH38056**

Keep your butter fresh and ready for use with the **"Butter Fresh"** Butter Dish. Butter will be protected from the fridge to the table.

- › Stainless steel tray with a food safe plexiglass lid
- › Size: 20 × 6 × 11cm



## "Corner" Corn Holders

**MH50965**

Smart self connecting design makes storage easy and prevents sharp points. High quality and easy to grip. Each pack contains 3 pairs.



## "Mix & Serve" Multifunction Tongs

**MH50316**

3-in-1 multifunction tongs, spoon, and whisk. Made from heat resistant, BPA-free material, they're perfect for protecting non-stick pans.







Thiers, France is the knife capital of the world, known for the production of stunning handmade forged knives. This is where Atelier Perceval, the luxury brand created and designed by Michelin-starred French Chef Yves Charles, calls home. Simple and timeless, these heirloom pieces will stand the test of time. We are the exclusive Australian importer for Perceval and supply to top restaurants across the country.

**Due to limited supply and high demand, we are unable to guarantee stock of Perceval's full range, however we are able to organise custom orders. Please contact your local OTL sales representative for more information.**



**1.**

**Sommelier's Knife**

A wine lover's best friend on **Page 224**

**2.**

**Pâté Knife**

A classic gift on **Page 225**

**3.**

**The 9.47**

The ultimate in French luxury on  
**Pages 226 & 227**



## Sommelier Knives

Inspired by the 19th century's knives, the Sommelier with its sleek and pure lines, innovates with its pinched toad, and a helical bit. The materials used for the handle have been selected for their naturally long lifetime and the high-end steel chosen for the blade ensures an extremely sharp edge. Choose from a selection of 3 beautiful wood handles or request a custom order.

Amourette (Snakewood) handle  
**AMLSAM**

Ebony wood handle  
**AMLSEG**

Pistachio wood handle  
**AMLSPS**





## Butter/Pâté Knives

A classic, simple gift that will be forever cherished, Perceval's Butter/Pâté knives feature the same hand-crafted, exceptional attention as the full range, including the renowned orange gift box, in a piece that anyone can use, and cherish, every day.

Perceval's Butter/Pâté knives can be supplied in a wide range of woods and finishes, please reach out to your OTL sales agent to learn more.

Ebony wood handle  
**ABEU01EG**



## The Perceval 9.47

Famous French chef Yves Charles created his "signature" table knife, the 9.47, while working as a Michelin-starred restaurateur in Paris. The idea was simple: produce a table knife with the same qualities as a folding knife. This model is designed to appeal to lovers of knives with excellent cutting power combined with an attractive, user-friendly shape, that is equally good at cutting soft white squid meat or a thick steak with shallots. The 9.47 table knife is now supplied to Michelin-starred restaurants in Paris, New York, Tokyo and beyond.

We have a wide range of knife finishes available. Contact your state OTL sales agent for more information





*Orange Folding Gift & Display Box sold separately*



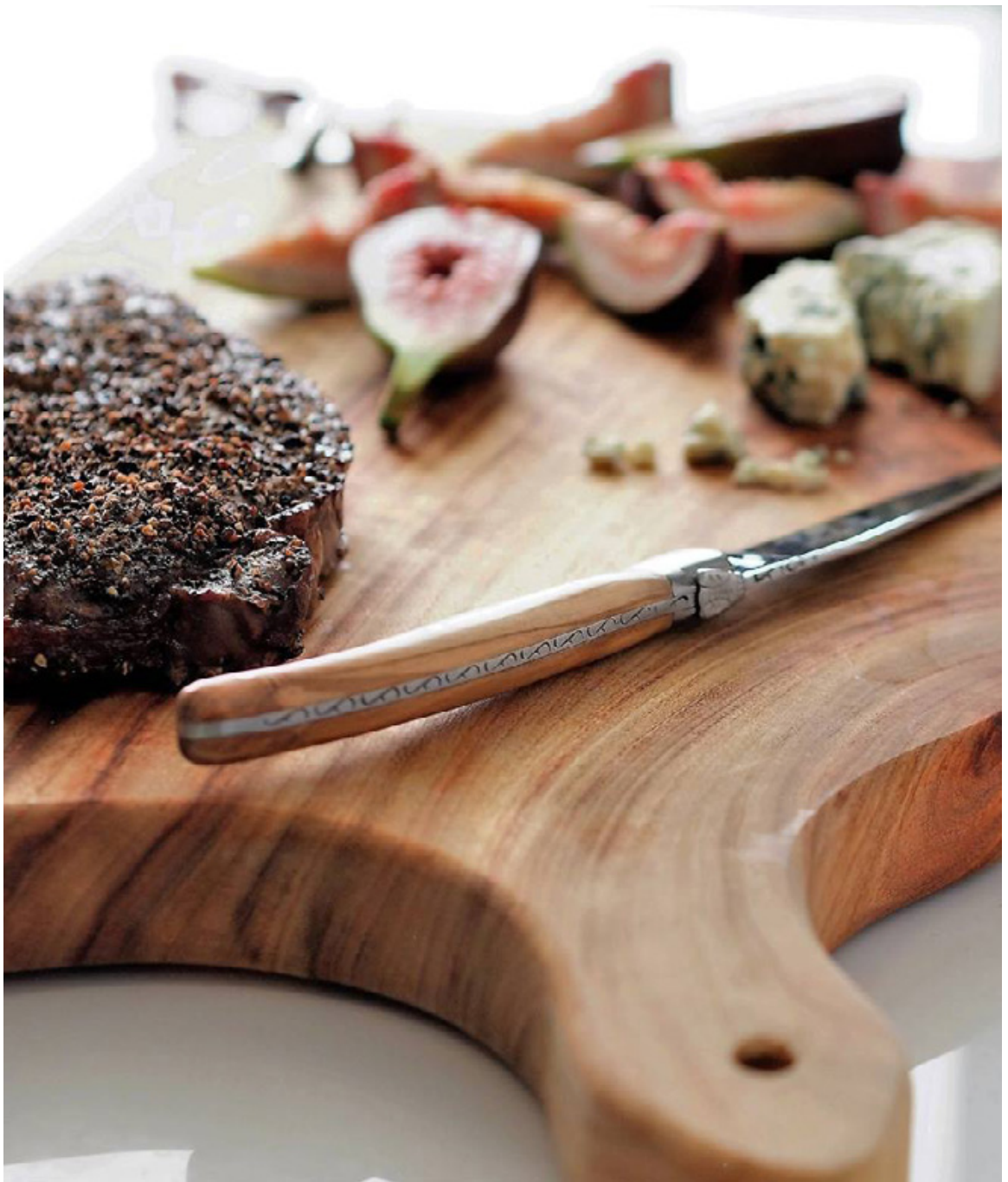
## 9.47 Steak Knives Set of 6

- › Table knives with flat tang, screw mounted
- › Assembled and handcrafted in Thiers, France
- › Semi-stainless steel blade finished using Cryogenic treatment
- › Handwash only

Set of 6 with cream handles  
**947B2PB**

Orange folding gift & display box  
**COFF6P**





Individually handcrafted and guaranteed for life, the prestigious French Laguiole en Aubrac range is synonymous with superb quality and intricate detailing. Single pieces have 109 production steps, two pieces take 166 steps, and three piece sets take as many as 216 steps.

Each knife is assembled by a single craftsperson in Laguiole, France. This guarantees that each knife has its own unique quality, for everyday use, generation after generation.



# 1.

## **Chef's Knives**

Relish in cooking with the most luxurious tools informed by the original masters from **Pages 230-235**

# 2.

## **Giftware**

Unique, handcrafted French pieces from **Pages 236-246**

# 3.

## **Servingware**

Beautiful carving sets and pastry servers with a hand-crafted touch from **Pages 247-256**

# 4.

## **Coutellerie**

Truly handcrafted French cutlery from **Pages 257-269**



# Premium Kitchen Knives

**The Blade** – Forged from 440 steel, the blade is incredibly strong and sharp.

**The Handle** – Handcrafted in exotic wood, horn or bone around an elegant and comfortable full-tang design, the varying materials all create a slightly different feel and balance, yet all are up to the demanding requirements of a professional chef.

- › There may be a six week lead time on particular items, due to their handcrafted production.
- › All knife sets can be customised with particular wood and knife varieties. Please discuss your bespoke order with your OTL sales agent, or contact our head office team.





# Cuisine Gourmet Knife Set *with* *Magnetic Knife Block*

These premium Chef Knife sets will prove to be an ideal companion for both pleasure and practical purposes. Each knife is forged with traditional french handcrafted quality, perfectly balanced from tang to blade.



## 6pc. Mixed Knife Set in Magnetic Block COL99CUIGOBMI

- › Boxwood Chef's Knife
- › Walnut Bread Knife
- › Teak Filleting Knife
- › Wenge Utility Knife
- › Olive Boning Knife
- › Prune Paring Knife
- › Magnetic Block

## 6pc. Ebony Knife Set in Magnetic Block COL99CUIGOEBI

- › Chef's Knife
- › Bread Knife
- › Filleting Knife
- › Utility Knife
- › Boning Knife
- › Paring Knife
- › Magnetic Block

# Olive Wood Kitchen Knives

Olive trees are one of the oldest lineages in existence with trees growing up to a thousand years old. Incredibly durable and dense, this wood is known for its distinctive unique grain that lends extraordinary depth and richness. Carved from heartwood, obtained near to the pith of a stem or branch, it can be cream or honey coloured with darker brown or black contrasting streaks. Because of the natural beauty and uniqueness of the grain, no two handles are the same. A mediterranean classic for those who love this characterful wood.

## Olive Wood Set of 6 *with Magnetic Block* **BLOCCHCUIOL**

### Individual Knives

20cm Bread Knife

**PAI20OLI**

20cm Chef's Knife

**CUI20OLI**

20cm Filleting Knife

**FDS20OLI**

15cm Utility Knife

**CUI15OLI**

15cm Boning Knife

**DES15OLI**

10cm Paring Knife

**CUI10OLI**



# Juniper Wood Kitchen Knives

Juniper wood has been used to make everyday objects and artisanal pieces for centuries, from knife handles and walking sticks to tobacco pipes, fine cigar boxes and precious inlays. With its yellow-brown colouring and delicate but high contrasting pattern, the peppery juniper wood is well suited for knife handles for its strength and robustness, holding up to intensive wear and tear.



## Juniper Wood Set of 6 *with Magnetic Block* **BLOCCHUIGE**

### Individual Knives

- 20cm Bread Knife  
**PAI20GEI**
- 20cm Chef's Knife  
**CUI20GEI**
- 20cm Filleting Knife  
**FDS20GEI**
- 15cm Utility Knife  
**CUI15GEI**
- 15cm Boning Knife  
**DES15GEI**
- 10cm Paring Knife  
**CUI10GEI**





# Box Wood Kitchen Knives

Boxwood is a hard fine-grained wood in white or light cream and as an evergreen, has long been considered emblematic of eternal life. Due to the tree's diminutive size this restricts it to smaller specialty items with fine details such as knife handles. The tree requires long and careful cultivation and is very rare as a 40-50 year old tree stems are at most 15cm thick.

## Box Wood Set of 6 *with Magnetic Block* **BLOCCHCUIBI**

### Individual Knives

20cm Bread Knife

**PAI20BII**

20cm Chef's Knife

**CUI20BII**

20cm Filleting Knife

**FDS20BII**

15cm Utility Knife

**CUI15BII**

15cm Boning Knife

**DES15BII**

10cm Paring Knife

**CUI10BII**



# Walnut Kitchen Knives

Walnut wood is dark, dense and tight-grained and is prized by woodworkers for its strength, colour and ability to be shaped into elaborate curves. It polishes to a very smooth finish, and over the years will develop a lustrous patina. Walnut wood has been crafted since the Victorian era and will always be an enduring favourite.



## Walnut Wood Set of 6 with *Magnetic Block* **BLOCCHUINO**

### Individual Knives

- 20cm Bread Knife  
**PAI20NOI**
- 20cm Chef's Knife  
**CUI20NOI**
- 20cm Filleting Knife  
**FDS20NOI**
- 15cm Utility Knife  
**CUI15NOI**
- 15cm Boning Knife  
**DES15NOI**
- 10cm Paring Knife  
**CUI10NOI**





## Juniper Wood Cake Knife

**P2T99GEI**

For that lovely celebratory cake or that relaxing Sunday coffee cake, this elegant **Cake Slicer** will wow guests and elevate any special occasion now, and for generations to come.



## Serving Bread Knife

**C2P99AMI**

Synonymous with superb quality and intricate detailing this **Bread Knife** is ideal for both pleasure and practicality.

Featuring 109 production steps for each knife, handcrafted by a single cutler, distinguishing true craftsmanship from mass production.



## Oyster Knives

Mussel Shell

**C2I99CQMI**

Oyster Shell

**C2I99CQHI**

Whether abalone aficionado, mussel maven, or clam connoisseur, these opulent oyster knives are a necessity for any shellfish savant.

Featuring a luxurious handle adorned with reclaimed shell material, and a thicker, specialised blade for breaking shellfish, these knives can create an authentic seaside dining experience, anywhere.





## **Ebony Pizza Knife & Acacia Serving Board Set** **CPZ99EBI**

Ideal for any pizzaiolo to elevate their serving, this hand-made, ebony handle, serrated pizza knife and serving board set is perfect for home-made and wood-fired pizzas.



## **BBQ Set** *with Wooden Handles in Leather Case* **SMB99**

These heavy-duty implements are as elegant as they are high performing. Use the tongs to lift hot vegetables and meats from the grill while keeping hands a safe distance from the heat.

The fork's slender prongs prevent loss of juice, keeping meats tender and flavourful. Also includes a superior knife with a hand forged blade for the finest of slicing.

Comes in a leather carrying pouch to store and travel with style.

## Sommelier's Knives

Designed specifically for professional wine service, these sommelier knives are uncompromising in design and function. Crafted in a variety of unique materials, providing the opportunity for a perfectly tailored gift.



### Sommelier's Knife Cases

**Brown Leather Case**  
*for Sommelier's Knife*

**ECM-BR**

**Black Leather Case**  
*for Sommelier's Knife*

**ECM-BK**





Juniper  
**SOM99GEI**



Solid Horn  
**SOM99PCI**



Olive Wood  
**SOM99OLI**



Ebony  
**SOM99EBI**







Buffalo Horn  
**SOM99BUI**



Buffalo Crust  
**SOM99CBI**



Camel Bone  
**SOM99OKI**



Boxwood  
**SOM99BII**



Briar Root  
**SOM99BRI**



Amourette/ Snakewood  
**SOM99AMI**



Marshmallow Red  
**SOM99WRI**



Maple Blue  
**SOM99TBI**



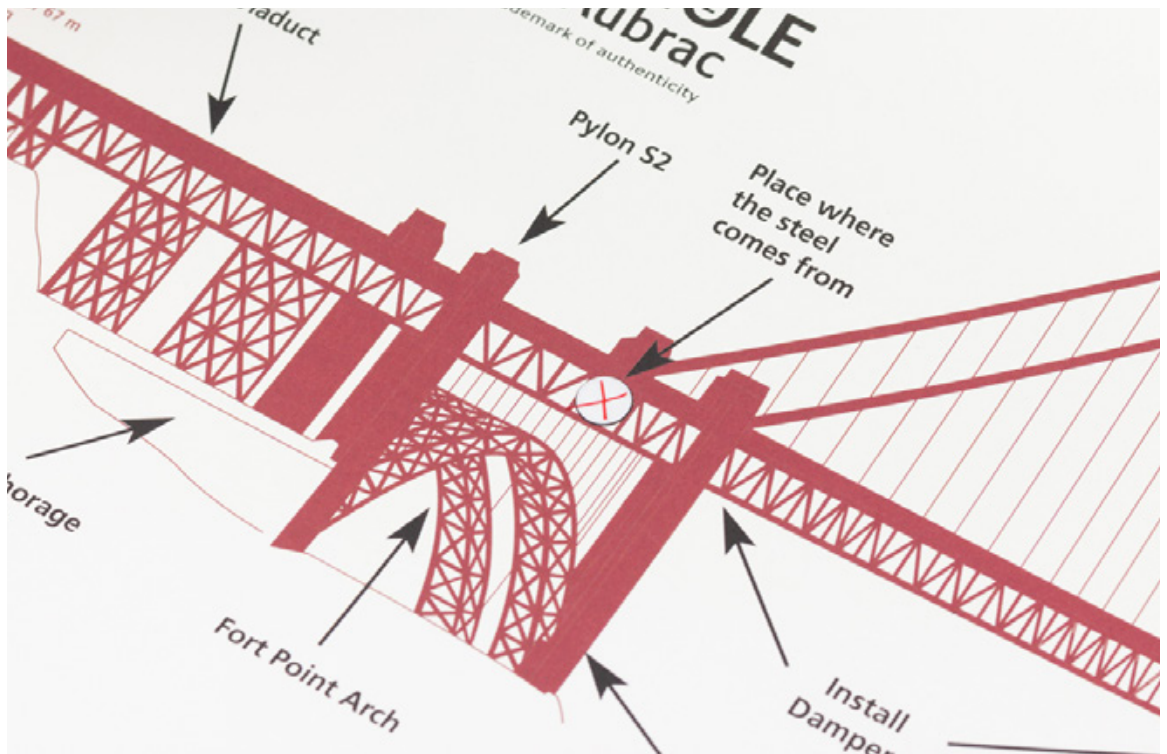
Grape wood with grape inlay  
**SOM99MRI**



Ebony/Ivory  
**SOM99DAI**



Ox Bone  
**SOM99OSI**



Steel from the Golden Gate Bridge **SOM99SAIL**



Fossilised Mammoth Ivory **SOM99IVI**



Steel from the Original Concorde Aircraft with resin handle **SOM99OCI**



# Folding Knives

Carried by shepherds and cattlemen throughout the Aubrac region in France, these knives hold 160 years of Laguiole history. A pocket knife that is built for life, expertly crafted out of the finest steel and rarest handle materials.

The handle pins are arranged as a cross, as a reference for the knife's pastoral lineages, for traveling pilgrims to always have a cross to pray to. With a blade and handle that are perfectly balanced, these knives will be a staple for picnics, camping or any outdoor adventure.



## Folding Knife Cases

**Brown Leather Case ECA-BR**  
for up to 12cm Folding Knife

**Black Leather Case ECA-BK**  
for up to 12cm Folding Knife

**Brown Leather Case ECH-BR**  
for Hunting Knife





## Backpacker's Folding Knife

- › Features 12cm blade
- › Magnetic display CDU Available



Boxwood  
L0512RBI

Juniper  
L0512REI

Oak  
L0512RHI

Olive Wood  
L0512RLI

Wenge  
L0512RWI

**10cm Folding knives**

- Marshmallow Red      **L0210WRI**
- Marshmallow White    **L0210WBI**



**11cm Folding knives**

- Juniper                      **L0211GEI**
- Solid Horn                **L0211PCI**
- Olive wood               **L0211OLI**
- Ebony                     **L0211EBI**
- Amourette/  
Snakewood               **L0211AMI**
- Briar Root                **L0211BOI**



**12cm Folding Knives**

- Juniper                      **L0212GEI**
- Solid Horn                **L0212PCI**
- Olive Wood               **L0212OLI**
- Ebony                     **L0212EBI**
- Pistachio                **L0212PII**
- Wenge                    **L0212WEI**
- Amourette/  
Snakewood               **L0212AMI**
- Marshmallow Red      **L0212WRI**



## 12cm Folding Knife *with Corkscrew*

Juniper

**L0312GEI**

Solid Horn

**L0312PCI**

Olive Wood

**L0312OLI**

Amourette/Snakewood

**L0312AMI**



## 14cm Hunting Knife

Solid Horn

**L0514PCIF**

Olive Wood

**L0514OLIF**

Deer Antler

**L0514BCIF**





# Rare Materials

Laguiole en Aubrac specialises in european and exotic wood varieties, bone, horn, stone; even incredibly rare materials such as mammoth molars or premium prestige materials such as carbon steel.

Please contact our sales team to discuss custom pieces.

## "Origine Concorde"

- › Made from steel sourced from a retired Concorde aircraft.
- › Includes a diagram showing the steel's source location.

"Origine Concorde" **SOM99OCI**  
Sommelier Knife

"Origine Concorde" **L0112ANIS**  
12cm Folding Knife



## "Golden Gate Bridge"

Made from steel sourced from the Golden Gate Bridge.  
Includes diagram showing source location

"Golden Gate Bridge"  
**SOM99SAIL**  
Sommelier Knife



"Golden Gate Bridge"  
**L0512SDI**  
12cm Folding Knife



# Champagne Sabres



For experienced sommeliers, champagne towers, weddings or wineries, these luxury Champagne Sabres will create an unforgettable impression. Heighten the drama of any special occasion by slicing open celebratory bottles with an expert hand.

► Blade length: 27.5cm

**Solid Horn  
CMS99PCI**



**Buffalo Horn  
CMS99BUI**



**Concorde Steel  
C1S99OCI**



## Ham Knives

A specialised must-have for charcuterie restaurants serving Iberico ham, Italian Prosciutto or Spanish Serrano ham. The long, thin, flexible blade gives expert control to navigate around the bones of all kinds of hams or shoulders to maintain precise thin 'stained-glass' slices.



Buffalo Horn  
**C2A99BUI**



Solid Horn  
**C2A99PCI**



Ox Bone  
**C2A99OSI**



Juniper  
**C2A99GEI**





Olive Wood  
**C2A99OLI**



Amourette/Snakewood  
**C2A99AMI**



Pistachio  
**C2A99PII**



Wenge Wood  
**C2A99WEI**

## Forged Chef Sets

Handmade and crafted in France by a master cutler, with 166 production steps in each set. Each decorative chasing on the metal spine serves as the signature of the craftsman who made the piece.

The perfect set to add drama and elegance for chefs slicing and serving in front of house. Longer fork tines allow the fork to go deeper into the meat so large pieces can be kept stable when carving.



Solid Horn  
SMQ99PCIF



Juniper  
SMQ99GEIF



Olive Wood  
SMQ99OLIF



Amourette/Snakewood  
SMQ99AMIF



## Forged Salad Servers

Breathtakingly beautiful and a joy to use, these **Forged Salad Servers** will present each dining occasion with timeless class.



Olive Wood  
**SMS99OLIF**

Juniper  
**SMS99GEIF**



Ebony  
**SMS99EBIF**



Ironbark Wood  
**SMS99IBIF**



Pistachio Wood  
**SMS99PIIF**



Yew Wood  
**SMS99IFIF**



Deer Antler  
**SMS99DEIF**



## Forged Carving Sets

A set for a lifetime to be handed down, for each generation to cherish. Made to the same rigorous standards as the Forged Chef Set, this carving set makes an impressive presentation for those special occasions.

Each decorative chasing on the metal spine serves as the signature of the craftsman who made the piece.

► Crafted in France with 166 production steps in each set.



Olive Wood  
**S2D99OLIF**



**Solid Horn**  
**S2D99PCIF**



**Camel Bone**  
**S2D99OKIF**



**Ebony Wood**  
**S2D99EBIF**



**Juniper Wood**  
**S2D99GEIF**



**Amourette/Snakewood**  
**S2D99AMIF**



**Briar Root**  
**S2D99BRI**



# Tableware Sets

Made to order by hand by a single cutler with 109 production steps for each piece of cutlery and a stamped signature on each forged spring-plate. Masterfully crafted ensuring superior durability and timeless quality. An heirloom to be passed down, ensuring dining occasions are a joy to remember.





## 28pc. Tableware Set in lidded gift box

Mixed woods  
**MEN99BFIH**

Juniper wood  
**MEN99GEIH**

Olive Wood  
**MEN99OLIH**

Contains:

- › 6 × Steak Knives
- › 6 × Forks
- › 6 × Soup Spoons
- › 6 × Coffee Spoons
- › 2 pc. Cheese and Fork Set
- › 2 pc. Forged Carving Set
- › Includes a decorative wooden storage box





# Woods of France Tableware

The included woods of France are:

Walnut, Olive, Plum or Prune  
Boxwood, Juniper, and Apple



Set of 6 steak knives  
**62C99BFIF**



Set of 6 table forks  
**62F99BFIF**



Set of 6 soup spoons  
**62P99BFIF**



Set of 6 coffee spoons  
**62K99BFIF**

# Stainless Steel Tableware

- › The traditional stainless steel sets feature a typical Laguiole En Aubrac construction, while the Monobloc range are forged from a single piece of stainless steel
- › Dishwasher safe



## Stainless Steel Tableware

Set of 6 steak knives **6MC99IBI**

Set of 6 table forks **6MF99IBI**



## Monobloc Matte Steel

Set of 6 steak knives **6MC99XXI**

Set of 6 table forks **6MF99XXI**



## Monobloc Polished Steel

Set of 6 steak knives **6MC99SXI**

Set of 6 table forks **6MF99SXI**

# Mixed Resin Tableware

A perfect set for fun personalities that can still appreciate the hand-crafted touch of Laguiole En Aubrac, Mixed Resin Tableware sets feature high-quality, hard-wearing resin handles in a beautiful bouquet of fresh, yet timeless colours.



**Set of 4 steak knives 42C99CMI**

Red, Orange, Yellow, Green

**Set of 4 table forks 42F99CMI**

Red, Orange, Yellow, Green



# Premium Steak Knives *Sets of 6 in Gift Box*

These showpiece sets are ideal for entertaining, cutting through the thickest ribeye with ease.

Laguiole's full tang construction ie. a single piece of steel from blade to handle, makes the knives perfectly balanced and of exceptional quality.



French Grown Olive Wood  
**62C99OLIH**



Solid Horn  
**62C99PCIH**



French grown Juniper  
**62C99GEIH**



## Aubraciens Handle



**Solid Horn**  
**61C99AHIH**



**Mixed woods of France**  
**61C99AWIH**

*Walnut, Olive, Plum, Boxwood,  
Juniper, and Apple*



## Cubique Handle



Olive Wood  
**6MC99DLIL**



Paperstone with titanium blade  
**6MC99DPIL**



Ancestral Beech Wood  
**6MC99DHUL**





### **A timeless mark of pride**

The spine of each Laguiole En Aubrac piece is carved and finished with a unique pattern that is the indelible signature of its individual craftsman.

# "Everyday Use" Steak Knives

Sets of 6 in Gift Box



Olive Wood **6MC99QL**



Paperstone **6MC99QP**  
*Stainless steel blade*



Paperstone **6MC99QPIH1N**  
*Titanium blade*

Mixed woods **6MC99QFI**  
*Olive, Juniper, Apple,  
Plum or Prune,  
Walnut, and Boxwood*



## Cheese & Pate Knives

From cheese and wine functions to serving a traditional cheese course, these beautifully crafted cheese and pate knives are ideal for elegant entertaining. Leave no detail behind with the final touch to each antipasto or charcuterie.

Made in France, featuring 109 production steps for each knife, handcrafted by a single cutler, including the famous Laguiole bee insignia.





## 2pc. Cheese Sets

- › Contains cheese knife & fork, beautifully gift-boxed



**Ebony wood**  
**SMF99EBIF**



**Juniper wood**  
**SMF99GEIF**



**Olive wood**  
**SMF99OLIF**



**Solid horn**  
**SMF99PCIF**

## 3pc. Cheese Sets

- › Contains cleaver, cheese knife & pâté knife, beautifully gift boxed



**Ebony wood**  
**S2P99EBIH**



**Juniper wood**  
**S2P99GEIH**



**Olive wood**  
**S2P99OLIH**



**Solid horn**  
**S2P99PCIH**

## "Le Buron" shape

Juniper wood  
**KMF99GEI**

Ebony wood  
**KMF99EBI**

Wenge wood  
**KMF99WEI**



## Manteouilla shape

Ashwood  
**CMB99MFRU**

Matte black beechwood  
**CMB99MHNU**

Wenge  
**CMB99MWEU**

Cherry  
**CMB99MERU**



## Forged Single Cheese Knives

Solid Horn  
C2F99PCI

Ebony  
C2F99EBI

Juniper  
C2F99GEI

Olive wood  
C2F99OLI

Amourette/Snakewood  
C2F99AMI



## Forged Butter/Pate Knives

Solid Horn

Boxwood

Ebony

Juniper

Olive wood

Amourette/  
Snakewood

C2B99PCI

C2B99BII

C2B99EBI

C2B99GEI

C2B99OLI

C2B99AMI







The perfect marriage of German steel and Italian design, Berkel is world renowned for their durability, innovation, and reliability.

Since 1888, Berkel has meant a set of values handed down with pride and shared in every piece that carries the Berkel name. As the oldest slicing company in the world, Berkel is not just a trademark, it's a dedication to elegance and quality.

\*Berkel purchased Italian company Del Ben in 2016.

Some stock may still display the Del Ben logo.



# 1.

## **Champagne Sabres**

A spectacular gift, and a spectacular show when used by an experienced sommelier on **Pages 272 & 273**

# 2.

## **Kitchen Knives**

Stunning Italian designed kitchen knives and storage and display blocks from **Pages 274-277**



# Champagne Sabres

Berkel handcrafted Champagne Sabres out-perform most in their class. A showstopping performance every time it's used, it will give an experience like no other. With a classic historic mid length shapes and forged stainless steel blades alloyed with nitrogen, these luxury sabres ensures a clean break for the ultimate dramatic effect.





**52cm Sabre** *with guarded handle and Stand*



**45cm Sabre** *with Wenge Wood Scimitar Handle in Gift Box*  
**BKLK45SWWGB**



# Knife & Block Sets

Handcrafted in Maniago, the historic knife region in the northeast of Italy, these prestigious sets offers both high functionality with ultimate luxury. With a distinctive oval-shaped knife blocks and meticulous attention to detail using only the finest of materials, every set is unique, just like a work of art.



## Sintesi Collection 6 Piece Knife Set

**CUSINE/R/6/56**

A collection of six knives with black resin handles in a minimalist fan oak block design.

Set Contains:

- › Carving knife (22cm)
- › Boning knife (16cm)
- › Ham slicer (26cm)
- › Chef's knife (20cm)
- › Bread knife (22cm)
- › Paring knife (10cm)



## Sintesi Collection 5 Piece Knife Set

**PRES/W/5/56**

A classy modern rosewood knife block with a 5 piece, sheared resin handle, knife set.

Set Contains:

- › Carving knife (22cm)
- › Ham slicer (26cm)
- › Chef's knife (20cm)
- › Bread knife (22cm)
- › Paring knife (10cm)



## Egg Block with Knife Set

The height of Italian luxury, these egg blocks are exquisitely designed, available in a brown leather finish, with extra mirror-polished stainless steel detailing and buffalo handled knives, or a modern, simple wooden finish with functional, black resin handles

### Set Contains:

- › Cook's knife (10cm)
- › Utility knife (13.5cm)
- › Bread knife (22cm)
- › Carving knife (22cm)
- › Chef's knife (20cm)



Blond Buffalo Horn Handle Knives  
in Brown Leather Block  
**SENSE/CUOIO/M**

Ad Hoc Resin Knives  
in Walnut Block  
**NOWE/5/01**

## Echo *Black Resin Handle Knife Set* in Oak Block

**ECHO/R/5/51**

Made using the finest materials by specialised Italian craftsman, the contrasting colours of each set gives a modern contemporary feel. Each knife is beautifully presented at an angle for ease of use.

### Set Contains:

- › Cook's knife (10cm)
- › Utility knife (13.5cm)
- › Bread knife (22cm)
- › Carving knife (22cm)
- › Chef's knife (20cm)





# Knife Blocks



## Ceppo Bag

A fresh, Mediterranean-inspired design, combining pure colour quality with highly innovative technology. The Ceppo Bag knife block has a removable and washable inner lining, guaranteeing maximum hygiene. Knives will insert between the integrated bristles with ease.

- › Maximum capacity of 6 knives
- › Remove inner lining to wash

Rosewood  
**BAG/W**

Stainless Steel  
**BAG/ACC**

White  
**BAG/B**

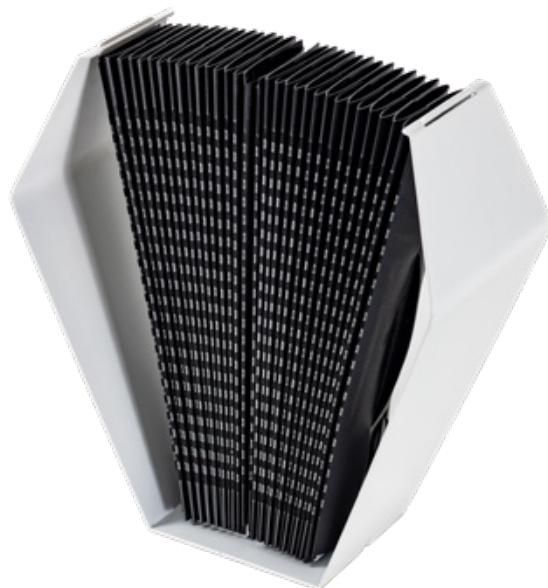
› Please note, knives are for demonstration only - they are not included with our Ceppo Bag range



## Pavo Fan

A functional yet futuristic-style knife storage solution. The outer frame is made from anti-corrosive powder-coated steel. The inner "fan" is easily removable for cleaning in the dishwasher, keeping knives hygienic. Outer frame has three different positions for maximum flexibility.

- › Stores up to 10 knives



Black  
**PAVO/BK/BK**

White  
**PAVO/WH/BK**

- › Please note, knives are for demonstration only - they are not included with our Pavo Fan range

# Catalogue Index

Accessibility .....208, 209

Australian Designs ..... 73, 116-119

Family Friendly ..... 116-119

..... 126-133

## Commercial and Catering

Bar and Counter Service..... 192, 224

.....238-241

.....246, 247, 273

Food Display.....

Food Service.....96, 97, 216

..... 248-255

Knives.....140-143

.....200, 201

Knife Accessories..... 70, 202

Prep Utensils ..... 90

Safety Equipment ..... 217

Storage.....74-85

Table Top ..... 86, 94, 95

## Domestic Kitchen

Baking ..... 102, 103, 126

..... 127, 132

Barware..... 24-27, 102

..... 192, 224

.....238-241

..... 246, 247

BBQ Tools .....109, 110, 237

Cutlery and Serving .....36-38

..... 60-64

..... 92, 93, 109

.....146-177

..... 216, 225

..... 226, 227

..... 236, 237

.....248-269

Flatware .....28-36

.....39-59

Innovations ..... 86, 87, 108

..... 126-133

..... 218, 219

Kitchen Knives ..... 136-143

.....190-201

..... 274, 275

Knife Accessories .....68-73, 202

..... 276, 277

Kitchen Knife Sets ..... 136-138

..... 191-193

..... 230-255

Prep Utensils .....104-107

.....186-191

.....204, 210-216

.....218-221

Salt & Pepper .....88-91, 203

Serving & Chopping Boards ..... 178-183

..... 237

Tea & Coffee .....10-23

.....98-101

## Giftware

Food and Beverage..... 12, 14-22

..... 28-34, 37-41

..... 43, 47

.....49-56, 60

.....61, 63, 64

.....98-101

..... 147-159

Homewares..... 8,9

Corporate Gifts..... 179-183

## Lifestyle

Travel ..... 111-121, 205

.....242-245

Food and Beverage..... 205

Homewares..... 8,9

..... 122, 123

Storage.....10,11

.....74-85, 123

Serving..... 178-183

## Luxury

Kyocera Limited Series ..... 200

Perceval.....223-227

Laguiole en Aubrac.....228-269

Berkel .....270-277



[illegible]



**Oceania Trade Link Pty Ltd**

**P.** +61 7 3356 6066 **P2.** +61 7 3856 6766 **E.** [sales@otlink.com.au](mailto:sales@otlink.com.au)  
Visit us online at [www.otlink.com.au](http://www.otlink.com.au)

**Oceania Trade Link is proud to represent**

Laguiole En Aubrac, Laguiole Jean Neron, Perceval, Betty Bossi, moHA!, Berkel, Kyocera  
and our own Icon Chef, Omotenashi and Takumi